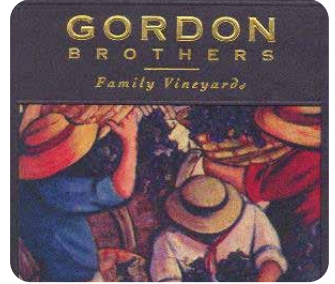




PUBLIC AUCTION

Bankruptcy Sale: Gordon Brothers Cellars
Case #20-02038-WLH11



WINE PROCESSING AND AGRICULTURAL EQUIPMENT SALE

LIVE WEBCAST AUCTION: Thursday, May 30 at 10am PT
(Online Bidding Only – No Onsite Bidding)

INSPECTION: Wednesday, May 29, 8am to 5pm PT
ASSET LOCATION: 531 Levey Road, Pasco, WA 99301



OXBO 316XL KORVAN GRAPE HARVESTER



2022
NEW HOLLAND T4-100V 4 WHEEL DRIVE TRACTOR



SS WINE FERMENTATION TANK, 4930 & 5100 GAL.

For information, contact us at 224.927.5320 or sales@pplauctions.com

VISIT WEBSITE AND BIDSPOTTER FOR COMPLETE SPECS: BidSpotter OR proxibid.



224.927.5320
pplauctions.com



AGRICULTURAL EQUIPMENT

2009 OXBO 316XL KORVAN GRAPE HARVESTER

2022 NEW HOLLAND T4-100V 4 WHEEL DRIVE TRACTOR, FPT 4 Cylinder Turbo Diesel, Enclosed Cab, Heat & A/C, Front Weights, 305 Indicated Hours

JOHN DEERE 5525N TRACTOR, 4 Wheel Drive, 4 Cylinder Turbo Diesel, 3 Point Rear Hitch + PTO Rear Auxiliary Hydraulics, Ace Hydraulic Attachment on Front, 4,360 Indicated Hours

JOHN DEERE 5420N TRACTOR, 4 Wheel Drive, 4 Cylinder Diesel, 3 Point Rear Hitch + PTO Rear Auxiliary Hydraulics, 3,310 Indicated Hours, S/N LV5420N348040

2014 JOHN DEERE 5093EN TRACTOR, 4 Wheel Drive, Enclosed/Heated Cab, 4 Cylinder Turbo Diesel Engine, 3 Point Rear Hitch + PTO Auxiliary Hydraulics, 3,195 Indicated Hours, S/N 1LV5093EAEZ671087

JOHN DEERE 825I 4-WHEEL DRIVE GATOR, Dump Bed, Orchard Spraying System, S/N 1M0825GGGETGM116201

JOHN DEERE MX10 MEDIUM DUTY ROTARY CUTTER, 126 in.

2015 RINERI TRP175 HEAVY DUTY HAMMER SHREDDER, S/N 27053



MATERIAL HANDLING

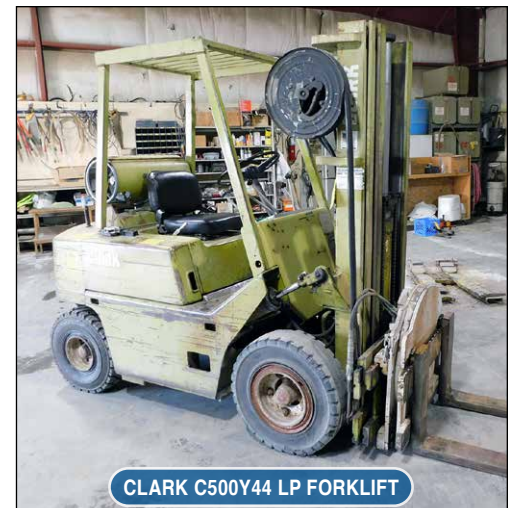
TOYOTA MODEL 25 48 VOLT ELECTRIC FORKLIFT, 4800 lbs. Capacity, Triple Mast, Side Shift, Non-Marking Tires, Exide Battery Charger

CLARK C500Y44 LP FORKLIFT, 3725 lbs. Capacity, Cascade Fork Rotator Attachment 2825 lbs. Capacity, 3 Stage Mast, Side Shift, Solid Tires, S/N Y35513814323

2014 EAGLE BLACKHAWK SERIES DUAL AXEL DUMP TRAILER, 14,000 lbs. Capacity, 12 ft. x 5 ft. Box, VIN184BU1225EC016362

MAINTENANCE SHOP

AIR COMPRESSOR, HAND TOOLS, POWER TOOLS, PNEUMATIC TOOLS, PRESSURE WASHERS, H-FRAME PRESS, FLOOR SCALE, GRINDER, CUT-OFF SAW, REPAIR PARTS and Much More.



WINERY EQUIPMENT

(10) LIQUID ASSET MANUFACTURING STAINLESS STEEL WINE FERMENTATION TANKS, w/Glycol Jackets, 2,500 Gallon

(2) SPOKANE METAL PRODUCTS, STAINLESS STEEL FERMENTATION TANKS, Glycol Jacket, 4,930 & 5,100 Gallon

(2) AAA METAL FABRICATION, STAINLESS STEEL FERMENTATION TANKS, w/Glycol Jackets, 5,800 Gallon

LIQUID ASSET MANAGEMENT, STAINLESS STEEL WINE FERMENTATION TANK, Glycol Jacket, 4,350 Gallon

GAI PROSPERO BOTTLING SYSTEM, Infeed Conveyor, McBrady Rinser, Filler, Corker, Collar Installer, Labeler, Accumulator Table

WILLMES MERLIN UP3000 PRESS, Fully Automatic Control, Stainless Steel, Vertical Juice Draining Channels, Central Infill, S/N 30353

YAMADA NDP-50BSH & NDP-40BSH PNEUMATIC DIAPHRAGM WINE PUMPS

ARS SWACH PORTABLE STEAM GENERATOR, Wand



1 of 10

SS WINE FERMENTATION TANKS, 2500 GAL.



SS WINE FERMENTATION TANK, 4930 GAL.



1 of 2

SS WINE FERMENTATION TANK, 5800 GAL.



SS WINE FERMENTATION TANKS, 4350 GAL.



WILLMES MERLIN UP3000 PRESS



LABELING LINE

For information, contact us at 224.927.5320
or sales@pplauctions.com

AUCTION TERMS & CONDITIONS

REGISTRATION & BIDDING: Everything will be sold to the highest bidders for cash, in accordance with the auctioneer's normal "Terms of Sale", which are available at the site or by request at 224-927-5320. A 18% Buyer's Premium will be added to the final bid price. Your bid is a contract: Place a bid only if you're serious about buying the item. If you are the high bidder, you will enter into a legally binding contract with PPL Auction.

PAYMENT: All successful Bidders agree to make full payment to PPL Auctions at the conclusion of the sale. Only Bank wire Transfer, Bank Check or Cashier's Check payable to PPL Auctions or Cash will be accepted. Firm and personal checks accepted only if accompanied by a letter from your bank guaranteeing your funds. If you are using a wire transfer your bank may wire the funds the day after the sale. All sales are subject to sales and/or local taxes unless a signed exemption form is presented at the time of the purchase. Payment will be made in US dollars only.

VERIFY DESCRIPTIONS: Note: Although all information has been obtained from sources deemed reliable, the auctioneer and seller make no warranty or guarantee, expressed or implied, as to the accuracy of the information contained in the auction brochure, lot catalog or sale web pages. Buyer agrees to accept assets purchased per standard auction terms, "AS IS, WHERE IS, WITH ALL FAULTS" WITHOUT ANY REPRESENTATION OR WARRANTY BY PPL AUCTION OR ANY OTHER PERSON. THERE ARE NO EXPRESSED OR IMPLIED REPRESENTATIONS OR WARRANTIES WITH RESPECT TO THE ASSETS INCLUDING, WITHOUT LIMITATION, ANY REPRESENTATION OR WARRANTY REGARDING THE MERCHANTABILITY OR FITNESS FOR ANY PARTICULAR PURPOSE.

REMOVAL & RIGGING: Removal and Rigging is the responsibility of the buyer. Anyone, either a buyer or a rigger, who uses a powered vehicle to remove anything from the auction site, will be required to present a certificate of insurance. Removal may begin when the auction has completed and payment in full has been made.

ISSUANCE OF TITLE: Titles relative to titled assets purchased will be mailed to the purchaser's address on file after payment is received and cleared. All invoices must be paid in full at end of auction. Any merchandise not paid for at this time will be considered abandoned and may be resold by auctioneer, any loss incurred in the resale to be borne by the original buyer.