



# TIMED ONLINE AUCTION

*Surplus to the Needs of: Midwest Service Center*

## STEEL COIL PROCESSING EQUIPMENT

**FEATURING:** Cauffiel CTL, Cincinnati Forte Slitter, Automatic Feed CTL and Loopco Banding Line

**Bids Start Closing on: Wednesday, March 1, 2023 at 9:00am CT**

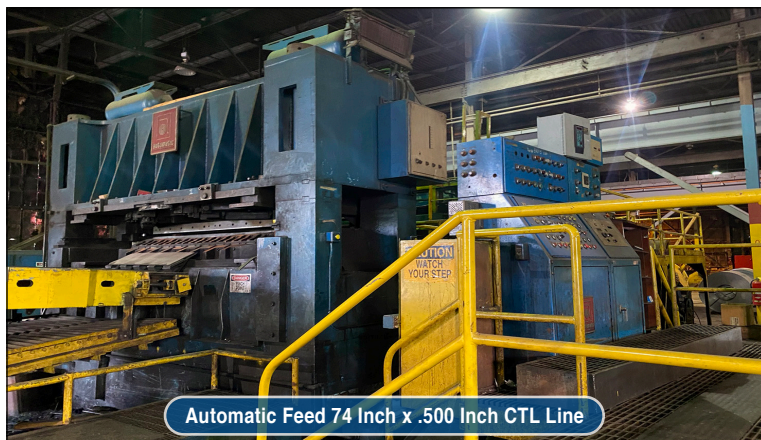
**INSPECTION:** Tuesday, February 28, 9am to 4pm CT • **LOCATION:** 2700 E. 7th Ave., Gary, IN 46402



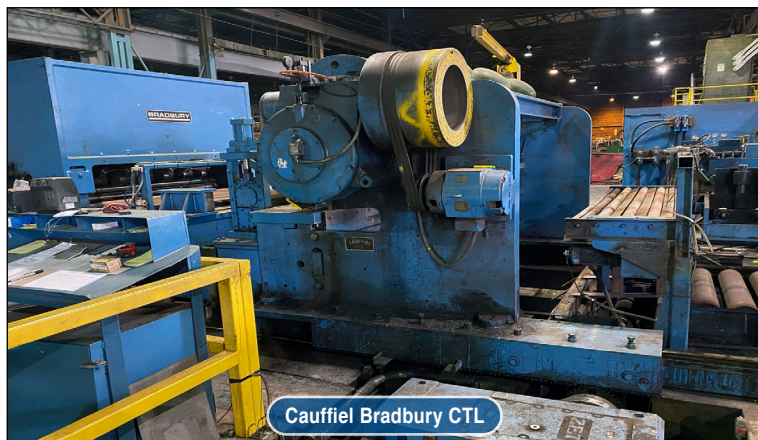
Cauffiel 96 Inch x .500 Flying Shear CTL Line



Cincinnati Forte 72 Inch x .187 Inch Single Loop Slitting Line



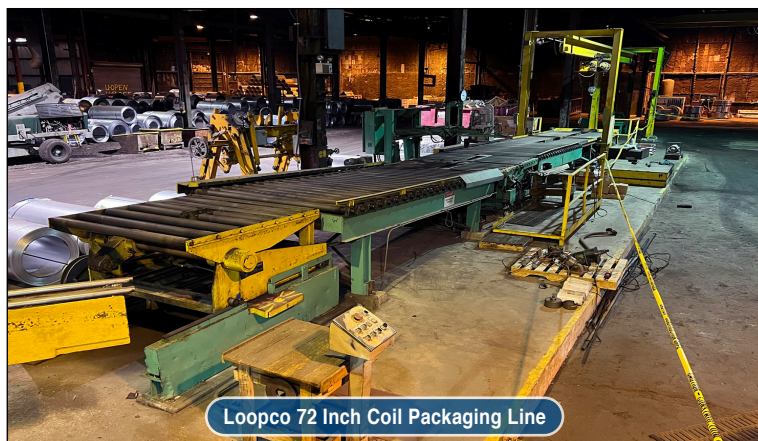
Automatic Feed 74 Inch x .500 Inch CTL Line



Cauffiel Bradbury CTL



Cincinnati Forte Slitter



Loopco 72 Inch Coil Packaging Line

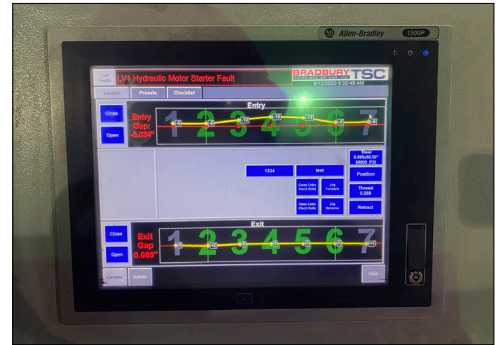
VISIT WEBSITE AND BIDSPOTTER FOR COMPLETE SPECS, THE AUCTION IS UP: **BidSpotter**





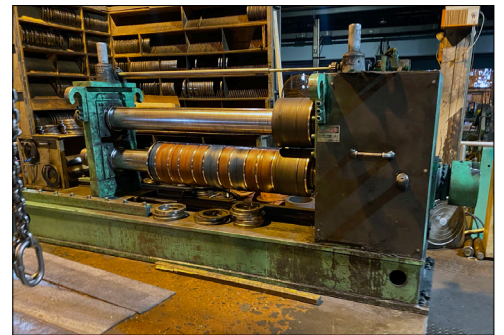
## CAUFFIEL / BRADBURY CTL LINE

Cauffiel 96" x .500" x 100,000# Flying Shear Cut To Length Line, L-R Line Direction, Carbon Steel, 0.075" – 0.500" Thickness, 36" - 96" Coil Width (84" Max Width Thru Bradbury Roll/Rollout Leveler), 100,000 Max Coil Weight, 39" – 84" Coil OD, 20" – 32" Coil ID, 144" MAX Sheet Length (492" MAX. w/ special handling), 20" Max. Pack Height, 20,000# Max. Pack Weight, 150 FPM Line Speed, Includes: Coil Storage Rack, Coil Car, Dual Cone Uncoiler, Peeler Table Pinch Rolls, 3 Roll / 7 Roll Flatteners, 11 Roll Bradbury 4HI Lever W/ 300 HP Motor, Roller Squaring Guides, Flying Mechanical Shear, 12' Sheet Stacker, 16' Stacker Conveyor, 24' Stacker Runout, Operators Controls, AC Controls, Drive Controls, Closed Loop Hydraulic Unit.



## CINCINNATI FORTE SLITTING LINE

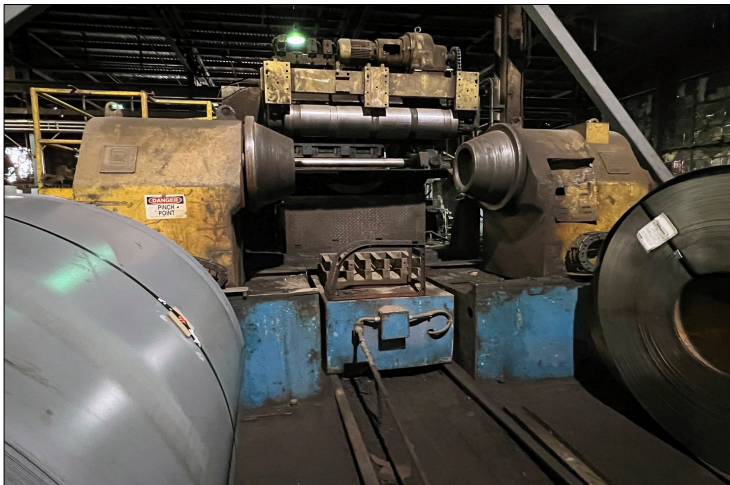
Cincinnati Forte 72" x .187" x 40,000# Single Loop Slitting Line, L-R "Z" Configuration Line Direction, 0.030" – 0.187" Thickness, 72" Max Width, 40,000# Max Coil Weight, 72" Max OD (Entry/Exit), 20" – 24" Coil ID Entry, 16" or 20" Coil ID Exit, 7" Slitter Arbor, Number of Slitting Heads – 2 (two), Line Speed – 800 FPM, Slitter HP 75, Recoiler HP 75, Includes: Floor Level Coil Car, Mandrel Uncoiler Water Cooled Brake, Hold Down Roll, Peeler Table, Entry Passline Rolls, Roller Type Side Guides, Entry Pinch Rolls, Entry Crop Shear, Roller type Side Guides, Slitter Head & Base, Looping Pit Entry Strand w/ Edge Guides, 1 (one) Scrap Winder, Pivoting Type Threading Table, Pad Type Tension Stand, Exit Pass Line Roll, Pivoting Recoiler Treading Table, Mandrel Recoiler, Floor Type Coil Car, Operators Controls, AC Controls, Drive Controls, Closed Loop Hydraulic System, Closed Loop Water Cooling System.





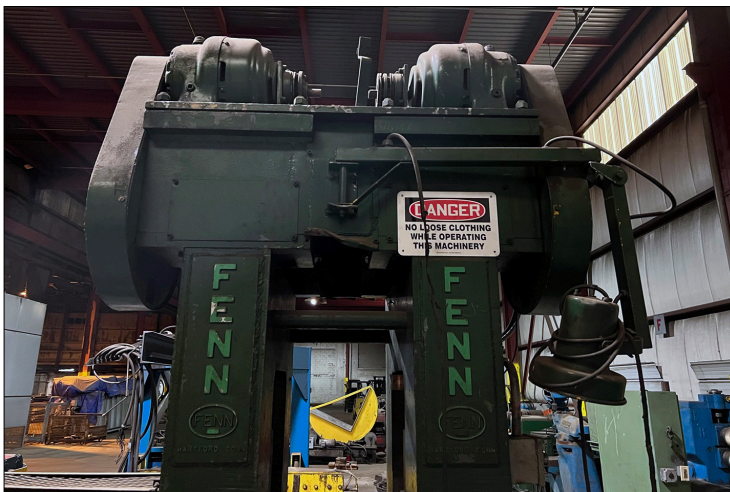
## **AUTOMATIC FEED CTL – ALLIANCE STEEL**

Automatic Feed 74" x .500" x 74,000# Cut To Length Line, R-L Line Direction, Carbon Steel, .060" MIN. – 0.500" @ 50" or 0.375" x 74", 74" MAX. Coil width, 50,000# Max Coil Weight, 36"-72" Coil OD, 20" – 30" Coil ID, 12"-192" Sheet Width, 30" Max Pack Height, 30,000# Max Pack Weight, 100 FPM Line Speed, Includes: Coil Storage Rack, Traveling Coil Car, Dual Cone Uncoiler, Peeler Table, Roller Side Guides, 8 Roll Flatteners, Roller Type Carry Over Table, Multi Roll Straightener with Entry/Exit Pinch Rolls, Roller Carry Over Table, Cutoff Shear, Pivoting Belt Conveyor, Stacker Pinch Rolls, 16' Sheet Stacker, 16' Stacker Conveyor, 16' Stacker Runout, Operators Controls, AC Controls, Drive Controls, Closed Loop Hydraulic System.



## **FENN ROLLING MILL**

Fenn 10" Diameter x 11.75" Face 2 High Rolling Mill, Motor Screwdown Adjustment, 100 HP, 150/200 RPM DC Motor, 65.6 to 1 Geabox Ratio, Includes: 2HI Fenn Mill W/ Pinion Stand & U-Joints, Mill Drive, DC Motor & Gearbox, Operators Controls, Drives and Controls.





## CUSTOM / WYSONG CTL LINE

Custom/Wysong 72" x .135" x 40,000# Roll Feed Cut to Length Line, L-R Line Direction, 0.135" Max Thickness, 72" Max Coil Width, 72" Max Coil OD, 20" Coil ID, 240" Max Sheet Length, 20" Pack Height, 15,000# Pack Weight, Includes: Traveling Coil Car, Two Roll Coil Lift, Dual Cone Uncoiler, Hold Down Roll, Peeler Table, Roller Side Guiders, Entry Pinch Rolls (3 Sets), 13 Roll @ 3.5" Diameter Straightener, Looping Pit Quadrant Tables, Full Width Roll Feeder, Wysong Shear w/ 20 HP Motor, Inspection Conveyor, Stack W/ Entry Pinch Rolls, 20' Sheet Stacker, 20' Elevating Stacker Lift Conveyor, 20' Stacker Runout and End Discharge Tables, AC Controls, Drive Controls, Closed Loop Hydraulic System.



## LOOPCO PACKAGING LINE

Loopco 72" OD x 10,000# Slit Coil Packaging Line, L-R Line Direction, 10,000# Max Coil Weight, 24" Slit Coil Width, 72" Max. Slit Coil OD, 16" – 20" Coil ID, ID/OD Semi-Automatic Bander, Mono-Rail & Hoist Stacker, Includes: 4-Arm Turnstile, Traversing Coil Downender, 15' Gravity Conveyor, Conical Roll Banding Table, Signode Semi-Automatic Bander, 14' Gravity Table, 20' Split Style Gravity Feed Coil Storage Conveyor, Manually Actuated ID Coil Grab, Operators Controls, AC Controls, Closed Loop Hydraulic System.

