

**MASSIVE 2-DAY ONLINE
IN REAL TIME AUCTION
OF INTERNATIONAL
INTEREST**



HIGH QUALITY COMPLETE BCTMP PULP PLANT

Chetwynd Pulp Mill Rd.,
Chetwynd, British
Columbia, Canada

**DATE: Wednesday
& Thursday, Sept. 7th
& 8th at 9:00 A.M. PT**
INSPECTION: Tuesday,
September 6th from
9:00 A.M. – 4:00 P.M. or
Earlier By Appointment

HIGHLIGHTS:

- Log Handling & Transport
- Complete Log Debarking
& Chipping Lines
- Radial Chip Stacking
Reclaim System
- Chip Washing, Dewatering,
& Preconditioning Systems
- (5) TMP Refiners
- Re-Pulper & Reject Refiners
- Bleaching & Chemical
Blending
- Complete Flash Drying
& Finishing
- Finished Pulp Slab
Pressing, Bailing,
Strapping Lines
- Zero-Effluent Process
Water Treatment Plant
- Steam Generation Plant
- Forklifts, Clamp Trucks,
& Material Handling
Equipment
- QC Lab
- Stainless Steel &
Aluminum Tanks
- (Over 150) Centrifugal,
Split Case, & Feedwater
Pumps to 24" x 24"
- MCC(s), Drive Controls,
& Electrical Distribution

In Conjunction With:



MILL SITE AERIAL VIEW



SENNABOGEN MATERIAL HANDLER



HYMAC
HYDRO
PULPER

\$5MM Cost
*Massive spare
parts, supplies,
and stores
inventories
including motors
and gear boxes,
pumps and pump
parts, valves and
actuators,
bearings, PLC
and electrical
components,
pulper and
screen parts,
replacement
screw press
components,
spare rolls,
hydraulic
components,
stainless steel
pipe, steel bar
and sheet stock,
hardware and
fasteners, safety
equipment and
consumables,
and much more!*

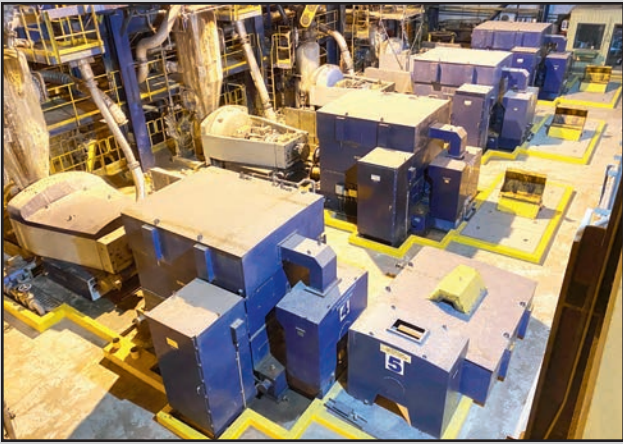
**ONLINE
BIDDING ONLY!**

**BID ONLINE AT
BidSpotter**

For complete catalog

crglc.com 1.800.300.6852

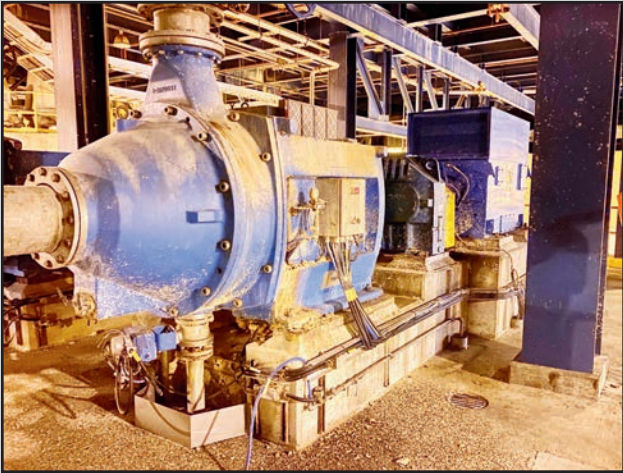
Auction Specialists • Appraisal Experts • Online or On-site
1654 King Street, Enfield, Connecticut 06082
(860) 623-9060 • (800) 300-6852 • Fax: (860) 623-9160
Bill Firestone, President



REFINER DECK



(2 OF 8) THUNE SP70 SL STAINLESS STEEL HYDRAULIC SCREW PRESSES DRIVE END



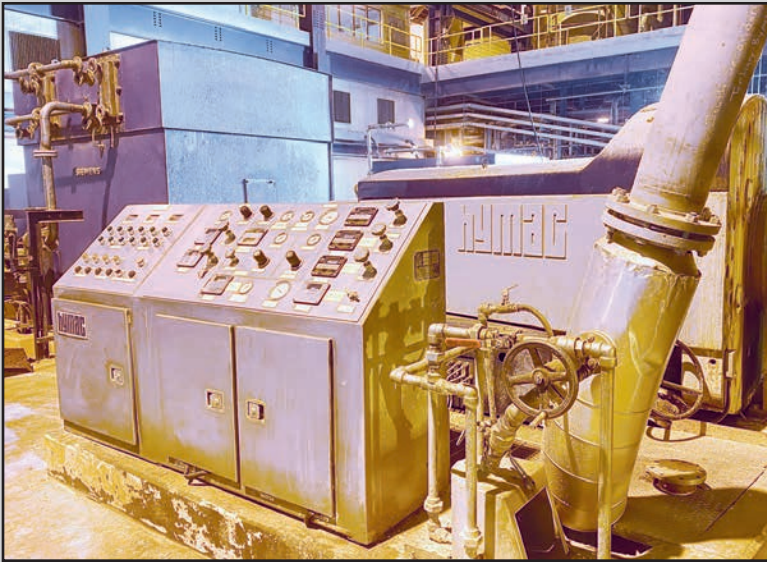
METSO 42" REFINER WITH 2,000 HP DRIVE



CELLECO 316 STAINLESS STEEL DISC FILTER



(1 OF 2) HYMAC 19' TWIN WIRE DE-WATERING PRESSES



(1 OF 5) HYMAC 64" TMP REFINERS WITH 14,000 HP DRIVES



(2 OF 8) THUNE SP70 SL STAINLESS STEEL HYDRAULIC SCREW PRESSES

PULP PROCESS

(5) HYMAC HSD-64, s/n 631-120-6865, 64" TMP refiners including Siemens Type 1DL 7641-8FF-82-Z, 14,000 HP, 13,800 volt, 1,800 RPM water cooled drive motor, with Siemens exciter panel, hydraulic and auto-lube units, agitated cyclone feeder, control console.

(8) THUNE Mdl. SP70 SL 316 Stainless Steel De-Watering Screw Presses, s/n 89 6036, with Hagglands Denison hydraulic drive, 250 HP Siemens Type RGZ VF2, 575 volt motor, pedestal controls.

(2) HYMAC Mdl. PT-13 5 Twin Wire De-Watering Presses, 12' width, (3) tension rolls, (3) pinch rolls, drive roll set with dual 150 HP drives, Hymac 345SR 5.636:1, 139 HP rated gear reducers, (replacement drive roll in stores), Nilsen end stage shredding roll, control cabinet.

2002 METSO Mdl. RF41-987-0984-01, 42" refiner with Toshiba TIKE Type 2,000 HP, 4160 volt, 1,780 RPM drive motor.

2000 VALMET Mdl. JC-041-9870666-01, 42" refiner with Reliance Type P 2,000 HP, 4,000 volt, 1,788 RPM drive motor.

CELLECO 316 Stainless Steel Disk Filter/Thickener, (36) 12' diameter segmented discs with stainless steel mesh, PLC controls, large assortment of spare new disc segments in crates.

Lot of assorted CELLECO Cleanpac 316 Stainless Steel Cleaning Banks, with PVC cones including (3) 72 cones, (1) 28 cone, (1) 10 cone, and (1) 7 cone.

DATE:
Wednesday
& Thursday,
Sept. 7th & 8th
at 9:00 A.M. PT
INSPECTION:
Tuesday,
September 6th from
9:00 A.M. – 4:00 P.M.
or Earlier By
Appointment

For complete
catalog
crgllc.com
1.800.300.6852



(1 OF 4) BIRD PRESSURE SCREENS



(1 OF 2) FLAKT STAINLESS STEEL STEAM COIL FLASH DRYERS



STAINLESS STEEL SIDE HILL SCREENS



FLAKT DRYER DRYING CYCLONES

PULP PROCESS, CONTINUED

(4) BIRD Mdl. 400, s/n ST13090, stainless steel pressure screens with 125 HP drive.

INGERSOLL-RAND Stainless Steel Centrisorter Pressure Screen, with 200 HP drive.

HYMAC Mdl. 16-3B-56 Turboflex Stainless Steel Re-Pulper, with Siemens Type RGS 588 frame 400 HP, 4,000 volt, 885 RPM motor, (4) structural steel flared leg floor mounted support frame, 1,000-lb. capacity hydraulic tilting bale lifter.

HYMAC Chip Impregnation System, 73 m3 atmospheric pre-steaming bin, discharge screw conveyor, vertical vessel, conveyors.

(11) HYMAC 72" 316 Stainless Steel Side Hill Screens.

(6) HYMAC Mdl. 2420 316 Stainless Steel Screw Feeders, 24" diameter x 20' long, with 20 HP drive.

(2) HYMAC APC-63 63" Stainless Steel Cyclone Steam Condensers.

(2) NILSEN Fluffer-Mixer with 200 HP Drives.

(2) HYMAC 316 Stainless Steel 54" Cyclone Steam Scrubbers, MAWP 75 PSI @ 320° F, MDMT 40° F @ 75 PSI.

(7) HYMAC Mdl. PSF Stainless Steel Plug Screw Feeders, 16", 18" and 12" diameter screw, with Siemens 300 HP, 500 volt, 480 amp, 1,150/1,700 RPM drive motor, Hymac PSF 160 hydraulic back press discharge chute.

(2) FLAKT Flash Dryers, including air makeup unit with 240 Ft² steam coils, 840,000-lb./hr. air from -38° C – +24° C using max. 28,000-lb./hr. of saturated steam at coil entrance. First and second stage hot zones with 304 stainless steel top mounted venturi cyclones, 120" turbo fan blowers with 600 HP Siemens Type RGS, 4,000 volt, 713 RPM drive motors, cooling stage 304 SS vertical piping and ducting with 96" turbo fan blower, 300 HP Type RGS, 575 volt drive motor, 36" exhaust fan with 100 HP, 575 volt motor, Johnstone 100 PSI @ 338° F condensing tank, all steam piping, manifolds, valves, and related equipment, roof top structural steel framing for cyclones.

(2) AB NILSEN Fibre-Flash Fluffer-Mixers, with 350 HP drive motor.

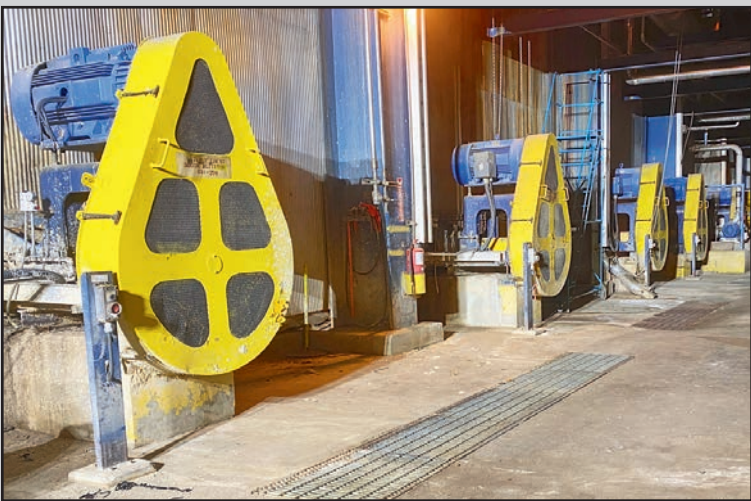
(2) AB NILSEN Fibre-Flash Hydraulic Down Acting Slab Presses, 34" x 34" x 28"H. finished bale size, vacuum bottom platen, 48" daylight opening, 30" stroke, 24" center hydraulic cylinder, twin stainless steel loading chutes, Rexroth hydraulic system with (3) 150 HP drive motors, Rexroth manifolds and valves, 64" long horizontal ram discharge, 36" x 25' chain drag discharge conveyor, PLC controls, all stainless steel stock chest, segmented, (3) with structural steel internal support, 25'W. x 175'L. x 28'H. with stainless steel floor. May be sold with (9) Hymac 150 HP horizontal agitators en bloc.



(1 OF 2) NILSEN CNC HYDRAULIC PLC SLAB PRESSES



(2) AB NILSEN FLUFFER-MIXERS WITH 350 HP DRIVES



STAINLESS STEEL STOCK CHEST WITH 150 HP AGITATORS

DATE: Wednesday & Thursday, September 7th & 8th at 9:00 A.M. PT

INSPECTION: Tuesday, September 6th from 9:00 A.M. – 4:00 P.M. or Earlier By Appointment

BID ONLINE AT BidSpotter

**ONLINE
BIDDING ONLY!**

MATERIAL HANDLER

2014 SENNEBOGEN Mdl. 830 MTD Wheeled High Reach Material Handler, 6.7L Cummins diesel, hydraulic elevating max. cab, pneumatic tires, (4) outriggers, grapple, 360° rotation, 5,803 hrs. indicated, date in service 03/23/2015, s/n 1766, engine s/n 22122052, cab s/n 830.0.1768.

ASPEN 30' x 108" Off-Road Log Trailer, with pintel hook.



SENNABOGEN MATERIAL HANDLER WITH LOG TRAILER

DATE: Wednesday & Thursday,
Sept. 7th & 8th at 9:00 A.M. PT

INSPECTION: Tuesday, September 6th from
9:00 A.M. – 4:00 P.M. or Earlier By Appointment



HOLMES REBUILT REPLACEMENT BLOWER



(NEW) RADER REPLACEMENT
CHIP FEEDER

WOOD ROOM

(2) NICHOLSON Debarking Lines, including dual drag chain log feeder decks and lifts, 10' x 40' each with auto-index log feed, electronic metal detector, 45" x 32" aperture, over 12' x 34" wide belt conveyor, hydraulic reject log kicker with 8' x 40' drag chain jog reject discharge conveyor, Nicholson Mdl. A5A -27-A5-RH hydraulic ring log debarker, twin feed work grippers with infeed conveyor, Nicholson Mdl. 96-12K-SOS, s/n 5944, 96" hydraulic disc chipper with Siemens Type RGS 1,250 HP, 4,000 volt, 1,176 RPM drive motor, Falk Mdl. 2140Y1-L, 1,200 RPM input/435.1 output, Rader chip feeder Mdl. 30 X 35 ESW, s/n E1192, Hymac 2014 stainless steel screw feeder with 10 HP drive, master control tower with Siemens Simatec multi-panel PLC controls.

HOG Fuel Scrap System, including 42" x 40' steel reject incline belt conveyor with Eriez magnet, Rader 36" x 48" wood hog with Siemens 300 HP, 4,000 volt, 1,785 RPM drive motor, assorted outfeed and connecting conveyors.

Reclaim Screening System, with (2) Acrowood spiral 8' x 12' diamond roll screens, Rader 8' diameter chip cyclone.

HYMAC 24" x 30 Stainless Steel Incline Screw Feeder, with 20 HP drive.



(1 OF 2) NICHOLSON DEBARKING-CHIPPING LINE
OVERVIEWS



RADER RADIAL CHIP STACKING SYSTEM



(1 OF 2) 500 HP REVERSE AIR BLOWERS



LIVE BOTTOM CHIP BIN-FEEDER



(1 OF 4) ALLIS CHALMERS MVR COMPRESSOR



NEBRASKA PACKAGE STEAM BOILER



(SAMPLE) NEW 400-700 HP MOTORS



METTLER TOLEDO ANALYTIC BALANCE



THWING ALBERT PROGAGE THICKNESS TESTER



THWING ALBERT TENSILE STRENGTH TESTER



(NEW) HYDRAULIC DRIVE HEAD



(SAMPLE) LARGE MOTOR INVENTORY



(SAMPLE) SPARE MOTOR INVENTORY

CHIP HANDLING & STORAGE, CONTINUED

WASTE WATER

(4) Single Stage Centrifugal Compressors, with 700 HP drives.
Water Pump, 20,000 PSI, in sea container.

STEAM PLANT

KEELER DORR-OLIVER Hog Fuel Water Tube Steam Boiler, 150,000-lbs./hr. @ 350 PSI with electrostatic precipitators.

BABCOCK & WILCOX Recovery Boiler, 150,000-lbs./hr. @ 350 PSI with B & W DIAMOND soot blower.

NEBRASKA Natural Gas Fired Package Steam Boiler, 50,000-lbs./hr. @ 125 PSI.

OVERHEAD CRANES

STAHLKRAN 30-Ton Double Girder, 40' span.

(2) STAHLKRAN 15-Ton Double Girder, 70' and 30' spans.

PLUS:

Electrical Switch Gear and MCC(s) Throughout Several Buildings (all dry transformers).

Over \$5,000,000 Cost Value of Stores Inventory.

(150+) Sulzer Pumps with Drives up to 900 HP.



(1 OF 10) SULZER 24" X 24" CENTRIFUGAL PUMPS

ONLINE
BIDDING ONLY!

(SAMPLE)
NEW HAMILTON
GEAR BOXES



TERMS OF SALE: To be sold in accordance with CRG Terms of Sale as published on our websites and in the auction catalog.
A buyer's premium will apply.
All equipment subject to pre-auction sales.
All Covid-19 safety protocols will be implemented.

M-D-N
Machinery Dealers
National Association

NAA
National Auction
Association

ASA
American Society
of Appraisers

IAA
International
Auctioneers Association