

ONLINE ONLY AUCTION

ALPENA BIOFUELS

412 Ford Avenue,
Alpena, MI 49707

DATE: Bidding Closes
Tuesday, August 9th
at 10:00 A.M.

INSPECTION: Monday,
August 8th from
9:00 A.M. – 4:00 P.M.

HIGHLIGHTS:

- ROSENBLAD VCE Evaporator
- 316 Stainless Steel & Hastelloy Reactors & Processing Tanks
- ALFA LAVAL Nozzle Style Separator Centrifuge
- Stainless Steel & Hastelloy Rectifiers, Strippers, & Clarifiers
- SULZER Distillation Column
- Material Handling Equipment
- 400 GPM RO Skid
- 150 HP Air Compressor
- (4) 65,000-Gallon Stainless Steel Fermenters
- CHEMCO Lime Silo with High Shear Mixing System
- EIMCO 316 Stainless Steel Vacuum Belt Filter
- Stainless Steel Water Tanks & Beer Wells
- GOULDS Stainless Steel Centrifugal Pumps
- ALFA LAVAL Spiral & Plate Heat Exchangers
- Lab Equipment
- Parts, Supplies, & Stores

In Conjunction With:



CELLULOSIC ETHANOL PRODUCTION PLANT

**ONLINE
BIDDING ONLY!**



ROSENBLAD VCE EVAPORATOR

20,000 FT² all steel engineered building and modular skid mounted office buildings will be sold!
(See details on page 5)
Detailed vessel & building drawings available on request



3-SECTION SKID MOUNTED PORTABLE OFFICE BUILDING



FLÄKT WOODS TURBOFAN MCR COMPRESSOR

BID ONLINE AT BidSpotter

For complete catalog

crgllc.com 1.800.300.6852

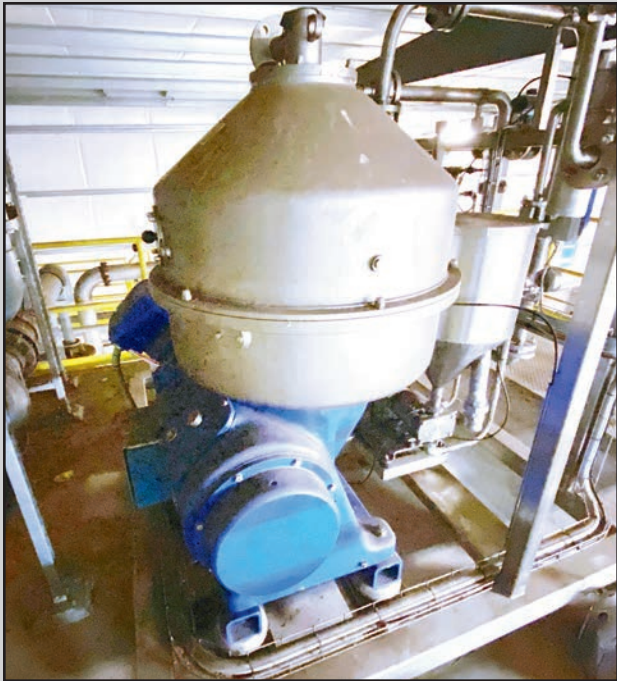
Auction Specialists • Appraisal Experts • Online or On-site
1654 King Street, Enfield, Connecticut 06082
(860) 623-9060 • (800) 300-6852 • Fax: (860) 623-9160
Bill Firestone, President



ROSENBLAD VCE EVAPORATOR



8,000-GALLON HASTELLOY REACTOR



ALFA LAVAL NOZZLE STYLE SEPARATOR



(SAMPLE) INTERIOR OVERVIEW

HIGHLIGHTS

2011 ROSENBLAD 316 Stainless Steel Lamella Plate Style Vapor Compression Evaporator, with Flakt Woods Turbofan MCR compressor, 88,000 CFM–165,00 PPH @ 196° F capacity, 2,700 HP 4,000 volt electric drive with soft start and hydraulic auto lube system.

96" OD x 30' HASTELLOY Hydrolysis Reactor, 10 trays x 24" OC, (4) vertical baffles with access ladders and support structure.

316 Stainless Steel Hydrolysis Clarifier, 13'6" round x 16' high, 16,000-gallon capacity, with Hastelloy sludge rake, 230" total height with rake, design flow rate: 1.1 GPM/FT² of surface area @ 210° F operating temperature with 304 stainless steel 72" ID x 144" high cone bottom flash tank 15 PSIG/FV @ -20° F–300° F.

2011 ALFA Laval FEQX-610S-34CH Nozzle Style 316 SS Separator Centrifuge, with Sew Eurodrive 65 HP motor and gravity fed stainless canister.

MASH Cooker, 304 stainless steel dimple jacketed, 6' deep x 17' high x 21-1/2' overall height, 3,750-gallon capacity, 100 PSIG @ 300° F–75 PSIG @ 300° F with Chemineer agitator Mdl. 21GTA-2, 2 HP, 1,200 RPM.

EIMCO 316 Stainless Steel Vacuum Belt Filter, 42" wide x 30' long, 4-lane applicator head, pneumatic adjustment on rollers, (4) overhead spray bars, (3) 24" deep x 60" high filtrate tanks, (3) Eimco 1 x 8 stainless steel centrifugal pumps, Travaini Type TRSC 100–700/O/P liquid ring vacuum pump, 40 HP.

2011 AB PROCESSING 304 Stainless Steel Rectifier/Stripper Column, 15" WCVAC/50 PSIG @ -30°–350° F, 30" OD inner shell x 720" straight wall, 840" overall height, at -30°/350° F, 30-tray.

SULZER Methanol Column Including Reflux Condenser, 150 PSIG @ 375° F, 200-gallon reflux reagent tank with purge pump, proof cooler with pump, Superchanger heat exchanger, twin ethanol filters and framework, total column height 19'8".



16,000-GALLON STAINLESS STEEL STORAGE TANK



AB PROCESSING
316 STAINLESS
STEEL
RECTIFIER/
STRIPPER



SULZER
METHANOL
COLUMN WITH
HEAT
EXCHANGER

**ONLINE
BIDDING ONLY!**

For complete catalog
crgllc.com 1.800.300.6852



(4) BROWN TANK 65,000-GALLON 304 STAINLESS STEEL FERMENTERS



US WATERS 400 GPM RO SYSTEM

For complete catalog
crgllc.com 1.800.300.6852



(1 OF 2) 10,000-GALLON STAINLESS STEEL STORAGE TANKS

AB PROCESS 200-Gallon Vertical Single Shell 304 Stainless Steel Pressure Vessel, 34" OD shell x 48" straight wall, 76" overall height, FV/50 PSIG x -30°–350° F internal design pressure, Voight Abernathy pump with 3 HP motor.

(4) BROWN TANK CO. 28' High x 20' Diameter 304 Stainless Steel Fermenting Tank, 65,200-gallon capacity, with Chemineer Agitator Mdl. 22GTA-7.50, 7.5 HP, 1,800 RPM.



(SAMPLE) GOULDS STAINLESS STEEL CENTRIFUGAL PUMPS

2011 BROWN TANK CO. Beer Well Tank, 24' high x 23' diameter, 304 stainless steel, 74,600-gallon capacity, 300° F max. operating temp., with Chemineer agitator Mdl. 22GTA-7.50, 7.5 HP, 1,800 RPM.

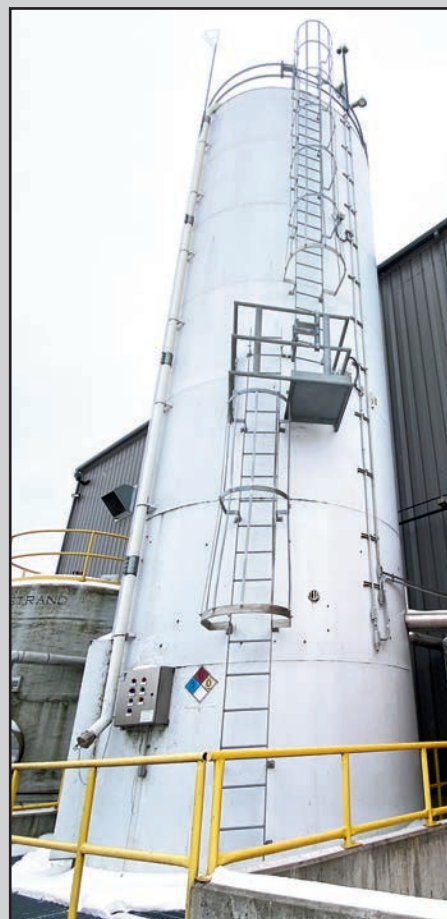
(6) 304 Stainless Steel 10,000-Gallon Storage Tanks.

US WATER SERVICE Skid Mounted RO System, 400 GPM feed flow, 30 PSIG min. at max. flow/60 PSIG static, permeate flow 374 GPM, 93.5 percent recovery, operating temperature 35°–100° F, also includes (3) high pressure pumps with (3) Vacum VFD drives, Allen Bradley Micro-Logix controls, (2) cartridge filters and Pentair Codeline cartridges (10) 80H30, (6) 80S60 and (1) 80S100 with assorted valves.

CHEMCO Hydrated Lime System, including approx. 42' high x 14' diameter enclosed cone bottom silo with roof top dust collector, pneumatic silo fill pipe, level monitors, screw feeder with drive panel, vibratory feeder, dual pumps and control panel.



3,000-GALLON 304 STAINLESS STEEL WARM WATER TANK



CHEMCO HYDRATED LIME SILO WITH HIGH SHEAR MIXING SYSTEM

DATE: Bidding Closes
Tuesday, August 9th at
10:00 A.M.

INSPECTION: Monday,
 August 8th from 9:00 A.M.
 – 4:00 P.M.

BID ONLINE AT BidSpotter

ONLINE
BIDDING ONLY!



GARDNER DENVER 150 HP SCREW AIR COMPRESSOR



HYSTER H60FT LP FORKLIFT



NEW HOLLAND 160 DIESEL SKID STEER LOADER

GARDNER DENVER EBQ99M Electra-Saver II Rotary Screw Air Compressor, s/n S365279, full load operating press 125 PSIG, 620 CFM, 150 HP, 460 volt, 60Hz, 3-phase, MAWP 200 PSI @ 250° F with Zeks Eclipse desiccant air dryer, oil-water separator and vertical steel receiver.



JLG 600AJ BOOM MANLIFT

HYSTER H60FT Propane Forklift, 5,650-lb. capacity, 3,635 hrs., solid tires, 187" lift, 3-stage mast with side shift.

NEW HOLLAND 160 Diesel Skid Steer Loader, 6' GP bucket, 3,633 hrs., enclosed cab with 6' hydraulic sweeper attachment.

GENIE GS-2632 Electric Scissor Manlift, 273 hrs., 500-lb. capacity, 26' max. lift height, 88 x 32" deck size.

JLG 600AJ Diesel Boom Manlift, 3,401 hrs., 60' platform lift height, 39' horizontal reach, 500-lb. capacity.

GOULDS, GRISWOLD, NASH, and NETZSCH Stainless Steel Centrifugal and Vacuum Pumps.

(15) ALFA LAVAL Stainless Steel Spiral and Frame-Plate Heat Exchangers.



(SAMPLE) ALFA LAVAL FRAME AND PLATE HEAT EXCHANGER



GENIE SCISSOR MANLIFT

Lab Equipment Including Lab Fume Hoods, Safety Cabinets, Ultrasonic Cleaners, Water Baths, THERMO SCIENTIFIC Evolution 60 UV-VIS Spectrophotometer, HEWLETT PACKARD 5890 Series II Gas Chromatograph, Sieve Shaker with Screens, Analytic Balances, Heated Stirring Plates, and Related.

Huge Assortment Valves, Actuators, Control Switches, Flow Controls, Magnetic Flow Tubes, Gauging, Metering Devices, Drive Controls, Spare Parts, Supplies, and Stores.

Extensive Assortment Hand and Power Tools, Safety Equipment, Welders, Pipe Threaders, and Much More!

Complete Electrical Distribution and Drive Controls Including SQUARE D 5,000 KVA Transformer, (3) SQUARE D Model 6 Control Centers, (3) SQUARE D HVL Load Current Interrupter Switches, Motor Starters, VFD Drives and Related.

Massive Quantity of Tube and Clip Scaffolding Including All Bolts, Clamps, Screw Jacks, Base Plates, and Assorted Parts, All Disassembled and Stacked.



SHAFT ALIGNMENT SYSTEM



(SAMPLE) PIPE AND CLAMP SCAFFOLDING

ONLINE BIDDING ONLY!



SQUARE D MOTOR CONTROL CENTERS



TRANSFORMER AND SWITCH GEAR

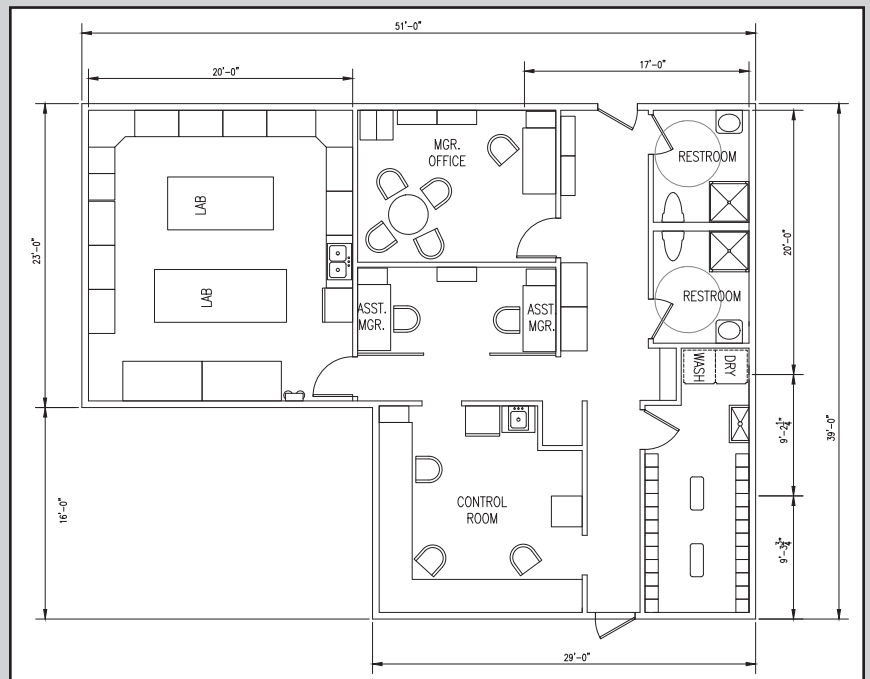
DATE: Bidding Closes Tuesday, August 9th at 10:00 A.M.



FINISHED OFFICE BUILDING



MANUFACTURING AND UTILITY BUILDINGS



BUILDING HIGHLIGHTS

20,000 Sq. Ft. clear span, all steel engineered, manufacturing building with +30 ft. clear height with 400 Sq. Ft. utility building.

2,000 Sq. Ft. modular office building, consisting of (3) steel skid mounted sections with office and lab spaces, (2) ADA bathrooms, AC/heat pumps.

TERMS OF SALE: To be sold in accordance with CRG Terms of Sale as published on our websites and in the auction catalog. A buyer's premium will apply. All Covid-19 safety protocols will be implemented.

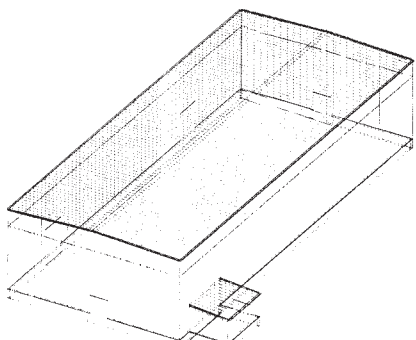


DATE: Bidding Closes Tuesday, August 9th at 10:00 A.M.
INSPECTION: Monday, August 8th from 9:00 A.M. – 4:00 P.M.

**ONLINE
BIDDING ONLY!**

DRAWING INDEX		DRAWING RELEASE HISTORY	
DRAWING TITLE	PAGES	TYPE	DATE
Cover Sheet	1	Anchor Rod Layout	12/2/19
Notes	2	Permit Drawings	12/2/19
Primary Structural	3-19		
Secondary Structural	19-23		
Covering	24-31		
Special Drawings			
Standard Erection Details	32-39		

Building Dept. Set
Any changes may affect
price and delivery date.



VP Buildings 3200 Players Club Circle Memphis TN 38125

For complete catalog crgllc.com 1.800.300.6852