

WEBCAST AUCTION

Bid Online in Real Time, No On-Site Bidding – Please call 224-927-5320 with any questions

Major Scrap Metal Recycling Company



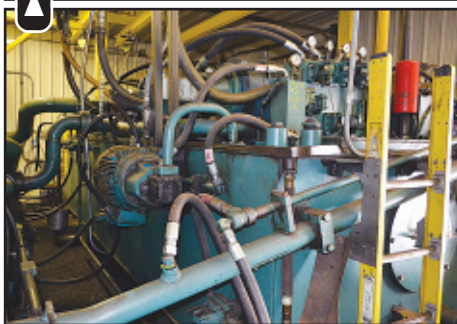
Surplus Equipment to the Continuing Operations of:

13830 Brainard Avenue
Burnham, Illinois 60633

WEBCAST AUCTION: Tuesday, February 2 at 10:00am CST

INSPECTION: Monday, February 1 9:00 am - 4:00 pm CST

**Scrap Baler • Material Handlers • Wheel Loaders • Excavator • Truck Tractors
Trailers • Roll-off & Luger Boxes • Container Chassis • Skid Steer Loaders
Trucks • Car Crushers • Air Compressors • Light Towers • Generators**



105 Revere Drive, Suite C
Northbrook, Illinois 60062

Phone: 224.927.5320
sales@pplauctions.com

www.pplauctions.com

Bid Online Only at
proxibid.
BidSpotter.com



SCRAP BALER

Harris Hydraulic Scrap Baler Model TG2229B, S/N 2787,
6' x 2' x 2' Max. Bale Size, 6' Wide x 20' Long x 4' High (est.) Feed Hopper, (2) 200 HP (est.) Hydraulic Pumps,
(2) Avery Weigh-Tronix Scales, Gravity Push-out Feed, 5 HP Reciprocating Vertical Tank Mounted Air Compressor (#BA02)

MATERIAL HANDLERS

2008 Sennebogen Elevating Cab Solid Tire Material Handler Model 840M, S/N 840.0.188, Young Hydraulic Grapple (#M-14)

2008 Sennebogen Elevating Cab Solid Tire Material Handler Model 830, S/N 830.0.1091, Magnetek 60" Electromagnet (#MH-15)

2014 Liebherr Solid Tire Material Handler Model LH60M Litronic, S/N WLH21204E2K074077, Diesel Power

Liebherr Elevated Cab Crawler Material Handler Model R954B, S/N 631-15200,
281 HP Diesel Power, One Piece Boom, 9' 6" Stick, 17' 8" Track Length, EROPS, Grapple

2006 Liebherr Elevated Cab Solid Tire Material Handler Model A944CHP, S/N EZK030063 (194-30063),
with 25 kw Generator, Winkle Model 68LDSA Scrap Magnet (#MH-19)

2002 Liebherr Solid Tire Material Handler Model A944, S/N HZ074477K014140, Fixed Cab, Magnet (#MH-12)

2004 Liebherr Elevated Cab Solid Tire Material Handler Model A954B, S/N WLHZ0714AZK020787, Outriggers, Young 4-Tine Grapple (#MH-61)

2013 Liebherr Solid Tire Material Handler Model LH50M, S/N 1203-68542 (#MH-69) (not in service, needs engine computer)



New
2006



New
2013



Bid Online in Real Time at
proxibid.
BidSpotter.com



New
2008



New
2009



New
2012



WHEEL LOADERS • EXCAVATOR

2012 Liebherr Articulating Wheel Loader Model L550, S/N 45630027, Enclosed ROPS, Forks & Bucket, 173 HP Diesel Power (#L-53)

2009 Case Articulated Wheel Loader Model 821E, S/N N8F204980, with Bucket, (#L-33)

2008 Case Articulating Wheel Loader Model 821C, S/N JEE016/1447, EROPS, Bucket, 205 HP Diesel Power (#L-37) (not in service)

2005 Case Articulating Wheel Loader Model 921C, S/N JEE0156675, with Bucket (#L-12) (does not run)

1997 Caterpillar Wheel Loader Model 950F II, S/N 55K02709, EROPS, 180 HP Diesel Power, Forks (#L-22) (not in service)

Kobelco Crawler Excavator Model SK330LC, S/N YC07-U1105, Mitsubishi 247 HP Diesel Power, One Piece Boom, 10' 10" Stick Length, 16' 4" Track Length, Labounty Rotating Hydraulic Shear, 14,485 hours indicated (#E-27)



TRUCK TRACTORS

(3) 2009 Mack Tandem-Axle Day Cab Truck Tractors Model CHU613,

VINs 1M1AN07Y89N004590 (PT-126), 1M1AN07Y19N004589 (#PU-120), 1M1AN07Y59N004594 (#PU-127), 12.7 Liter Diesel Power

2009 Mack Tandem-Axle Day Cab Truck Tractor Model CXN613, VIN 1M1AK06Y87N021252 (#PU-114), 12.0 Liter L6 Diesel Power

(2) 2008 Mack Tandem-Axle Day Cab Truck Tractors Model CXU613,

VINs 1M1AW07Y18N002658 (#PU-123), 1M1AW07Y08N001274, 12.7 Liter L6 Diesel Power (#PU-130)

2006 Mack Tandem-Axle Day Cab Truck Tractor Model CXN613, VIN 1M1AK06YX6N015032 (#PU-112)

2005 Mack Tandem-Axle Day Cab Truck Tractor Model CV713, VIN 1M1AG11405M022588, 12.0 Liter Diesel Power (#PU-110)

2002 Mack Tandem-Axle Day Cab Truck Tractor Model CH613 600, VIN 1M1AA13Y62W148159, 12.0 Liter L6 Diesel Power (#PU-135)

TRAILERS

(4) 2001 Hyundai Gondolas – (3) 48' & (1) 45',

VINs 3H3C492S91T107821 (#GT-4808), 3H3C492S51T108142 (#GT-4809), 3H3C492S11T107604 (#GT-4810), 3H3V452C4ST000199 (#GT-4812)

(2) 1996 & (2) 1999 Monon 48' x 6' High Tandem-Axle Gondolas,

VINs 1NNC04826TM286123 (#GT-4813), 1NNC04824TM286511 (#GT-4807), 1NNZA4824XM309136 (#GT-4814), N/A (#GT-4815)

1987 Stoughton 48' x 6' High Gondola, VIN 1DW1A482X1655 (#GT-4816)

1987 Lufkin 48' x 6' High Gondola, VIN 1L01A482716107 (#GT-4817)

(2) 2011 & (1) 2005 Dierzen 39' Tandem-Axle Dump Trailers,

VINs 1D913272PBB059816 (#N/A), 1D913272PBB059815 (#815), 1D913272A5A059829 (#N/A)

(1) 2006 & (1) 2007 Wilson 48' Tandem-Axle Flatbed Trailers, VINs 4WWBGB6B96N610739 (#FB-266), 4WWBGA6B97N611336 (#FB-267)



ROLL-OFF & LUGGER BOXES • CONTAINER CHASSIS

(80+) Assorted Roll-off & Lugger Boxes

(3) 1998 Stoughton 53' Tandem-Axle Container Chassis –

(2) Model CCG, VINs 1DW1C5329WE198377 (#GT-4801), 1DW1C5324WE198383 (#GT-4802)

& (1) Model CHA, VIN 1DW1C5324WE198203 (#GT-4803)

SKID STEER LOADERS • TRUCKS • CAR CRUSHERS

2013 Caterpillar Skid Steer Loader Model 272D, S/N CAT0272DCB5W00411, with Bucket (#SS-85)

2011 Caterpillar Skid Steer Loader Model 262C, S/N MST04750, with Bucket (#SS-35)

2005 GMC 2000 Gallon Tandem-Axle Water Truck Model C7500, VIN 1GDM7C1C75F515102, Diesel Power

2009 Ford Pick-up Truck Model F-250, VIN 1FTNF20549E629418, 5.4 Liter V8

Freightliner 500 Gallon Fuel Truck Model F70, VIN RL585897

(2) 2008 R.M. Johnson 53' Tandem-Axle Portable Car Crushers Model A+EZ Crusher, S/Ns RMJ61, J488SA 240295 (needs repair)

AIR COMPRESSORS • LIGHT TOWERS • GENERATORS

(3) Ingersoll Rand Portable 185 CFM Diesel Air Compressors Model P185WJD

(3) Ingersoll Rand Diesel Powered Portable Light Towers Model LS-60H-T4F

Generac Diesel Stand-By Generator Model 98A07400S, S/N SD025-A163, with Controls

Atlas Copco Portable 65 KVA / 52 kw Diesel Generator

Multiquip WhisperWatt Diesel Generator Model DCA70US1, S/N 8800524 (#GEN-9)

WEBCAST AUCTION
February 2 10:00am

Bid Online in Real Time at

proxibid.

BidSpotter.com



105 Revere Drive, Suite C
Northbrook, Illinois 60062

www.pplauctions.com

SCRAP METAL RECYCLER



WEBCAST AUCTION



13830 Brainard Ave.
Burnham, IL 60633

WEBCAST AUCTION: Tues. February 2 10am CST

INSPECTION: Mon. February 1 9:00am - 4:00pm CST



INDUSTRIAL
AUCTIONEERS
ASSOCIATION



Machinery Dealers
National Association

**ATTENTION: PLANT MANAGER
OR MACHINERY BUYER**

WEBCAST AUCTION Scrap Metal Services

WEBCAST AUCTION: Tues. February 2 10am

INSPECTION: Mon. February 1 9:00am - 4:00pm CST

Auction Terms & Conditions

REGISTRATION & BIDDING: Everything will be sold to the highest bidders for cash, in accordance with the auctioneer's normal "Terms of Sale", which are available at the site or by request at 224-927-5320. **All bids are in US dollars. An 18% Buyer's Premium will be added to online bids.**

Your bid is a contract: Place a bid only if you're serious about buying the item. If you are the high bidder, you will enter into a legally binding contract with PPL Auction.

PAYMENT: All successful Bidders agree to make full payment to PPL Auction at the conclusion of the sale. Only Bank Wire Transfer, Bank Check or Cashier's Check payable to PPL Auction will be accepted. Firm and personal checks accepted only if accompanied by a letter from your bank guaranteeing your funds. If you are using a wire transfer your bank may wire the funds the day after the sale. All sales are subject to sales and/or local taxes unless a signed exemption form is presented at the time of the purchase. Payment will be made in US dollars only.

VERIFY DESCRIPTIONS: Note: Although all information has been obtained from sources deemed reliable, the auctioneer and seller make no warranty or guarantee, expressed or implied, as to the accuracy of the information contained in the auction brochure, lot catalog or sale web pages.

Buyer agrees to accept assets purchased per standard auction terms, "AS IS, WHERE IS, WITH ALL FAULTS" WITHOUT ANY REPRESENTATION OR WARRANTY BY PPL AUCTION OR ANY OTHER PERSON. THERE ARE NO EXPRESSED OR IMPLIED REPRESENTATIONS OR WARRANTIES WITH RESPECT TO THE ASSETS INCLUDING, WITHOUT LIMITATION, ANY REPRESENTATION OR WARRANTY REGARDING THE MERCHANTABILITY OR FITNESS FOR ANY PARTICULAR PURPOSE.

REMOVAL & RIGGING: Removal and Rigging is the responsibility of the buyer. Anyone, either a buyer or a rigger, who uses a powered vehicle to remove anything from the auction site, will be required to present a certificate of insurance. Removal may begin when the auction has completed and payment in full has been made.

ISSUANCE OF TITLE: Titles relative to titled assets purchased will be mailed to the purchaser's address on file after payment is received and cleared.

All invoices must be paid in full at end of auction. Any merchandise not paid for at this time will be considered abandoned and may be resold by auctioneer, any loss incurred in the resale to be borne by the original buyer.

ONLINE BIDDING ONLY

proxibid

BidSpotter.com

ON-LINE BIDS SUBJECT TO 18% BUYER'S PREMIUM

Scan
with
your
phone
to link
to our
website



105 Revere Drive, Suite C Northbrook, Illinois 60062

Phone: 224.927.5320 sales@pplauctions.com

www.pplauctions.com