

WEBCAST AUCTION

Bid Online in Real Time, No On-Site Bidding – Please call 224-927-5320 with any questions

Drilling, Water Hauling & Oilfield Services Company

By order of the US Bankruptcy Court –
Case #19-14276-JDL, #19-14561-JDL,
#19-14563-JDL, and #20-10461-JDL:



Longhorn Companies

300 N. Cemetery Road
Hennessey, Oklahoma 73742

WEBCAST AUCTION: Wednesday, September 16 10:00 am CDT

INSPECTION: Tuesday, September 15 9:00 am - 4:00 pm CDT

Well Service Rigs • Truck Tractors • Winch Truck Tractors • Bucket Trucks • Crane Trucks
Hot Oiler Trucks • Pick-up Trucks • Flatbed Trucks • Pump/Acid/Kill Trucks • Dump Trucks
Cement Truck & Silo • Drop Deck Trailers • Rock Trailers • Trailers • Dog House Trailers
Air Compressor • Pump Skids • Rough Terrain Crane • Motor Graders • Excavators
Crawler Tractors • Wheel Loaders • Loader Backhoe • Mud Truck • Skid Steer • Compactors



New
2019



5 Available



BID
ONLINE
ONLY

proxibid
BidSpotter.com

13% Online Buyer's Premium Applies



www.pplauctions.com

105 Revere Drive, Suite C
Northbrook, Illinois 60062

Phone: 224.927.5320
sales@pplauctions.com



www.cia-auction.com

2020 Dunlap Street
Cincinnati, Ohio 45214

Phone: 513.241.9701
info@cia-auction.com



AUCTION DATE:
September 16



WELL SERVICE RIGS

Rig 35: N.O.V. 5XL 5C, 104', 350 lb. • **Rig 30:** Franks 1287-160 5-Axle, 108', 250 lb. • **Rig 31:** Franks 5-Axle, 108', 250 lb.
Rig 36: N.O.V. 5XL 5C, 104', 250 lb. • **Rig 25:** Franks 1287-160 4-Axle, 96', 210 lb. • **Rig 104:** 2003 Cameron 5-Axle, 104', 250 lb.
Rig 102: 1981 Cooper LT-350 4-Axle, 97', 200 lb. • **Rig 101:** Cooper 5-Axle, 97', 200 lb. • **Rig 103:** 1981 Taylor 1500 3-Axle, Single/Double Derrick
(3) McKissick 150 Ton & 100 Ton Blocks • 1981 Lowboy Mobile Drill • 1992 Mack RD688S • Tandem-Axle Swab Rig Truck

TRUCK TRACTORS

(5) 2019 Mack P164T Tandem-Axle Day Cabs (*located in Coahoma, TX*) • 2012 Kenworth Tandem-Axle Day Cab • 2012 Mack Tandem-Axle Day Cab
(2) 2012 Kenworth Tandem-Axle Water • 2010 Mack CHU613 Tandem-Axle • 2009 Mack GU713 Tandem-Axle
2009 Ford F-750 Single-Axle Treating/Pump • 2008 Mack CHU Tandem-Axle • 2007 Mack CV713 Tandem-Axle Vacuum
2007 Mack CV713 Tandem-Axle • 2007 Mack CHU613 Tandem-Axle • 2007 Mack CTB713B Tandem-Axle Pump • 2007 Mack CV713 Tandem-Axle
2007 Mack CHN613 Tandem-Axle • 2007 Mack Tandem-Axle Winch • 2006 Mack CHN613 Tandem-Axle • 2006 Mack CV713 Tandem-Axle
2006 Mack CHN613 Tandem-Axle Pump • 2005 Mack CV7 Tandem-Axle • 2005 Mack CV713 Tandem-Axle • 2005 Mack Tandem-Axle Day Cab
2002 Mack CH613 Tandem-Axle Pump • 1999 Mack CL713 Tandem-Axle Pump • 1998 Mack CH613 Tandem-Axle • 1998 Mack CH613 Tri-Axle
1996 Mack CH613 Tri-Axle • 1996 Mack RD688S Tandem-Axle Pump

WINCH TRUCK TRACTORS

2008 Mack GU713 Tandem-Axle • 2008 Mack CHU613 Tandem-Axle • 2005 Mack CHN613 Tandem-Axle

BUCKET TRUCKS

2015 International Terra Star SFA-4X2 • 2007 International 4100 SBA-4X2 with ETC371H Crane • 2004 Ford F-550 4x4 Bucket





Located in Coahoma, TX
Call 224.927.5320 for appointment to inspect





CRANE TRUCKS

2009 Peterbilt/Manitex 50 Ton Crane • 2007 Mack/National 900 Crane
 2007 Mack CTP13 Tri-Axle/National 14127H Crane
 2000 Mack CL713 Tri-Axle/Manitex 38124S 30 Ton (est.)

HOT OILER TRUCKS

2007 Mack CV713 Tri-Axle
 2001 Mack Tandem-Axle
 1998 Mack RD6 Tandem-Axle

PICK-UP & FLATBED TRUCKS

2015 International 12' Single-Axle 4x4 Crew Cab Flatbed • 2015 International Terra Star 12' 4x4 Flatbed
 2014 Ford F-150 XLT 4x4 Crew Cab Pick-up • 2014 International 12' Single-Axle 4x4 Crew Cab Flatbed
 2014 International Terra Star 12' 4x4 Flatbed • 2013 Ford F-250 SD 4x4 Crew Cab Pick-up • 2012 Ford F-550 Single-Axle Flatbed
 2012 Ford F-250 4x4 Crew Cab Pick-up • 2012 Ford F-250 XL FX4 Crew Cab Pick-up • 2012 Ford F-250 SD 4x4 Crew Cab Pick-up
 2011 Ford F-250 XLT FX4 Crew Cab Pick-up • 2011 Ford F-250 SD 4x4 Extended Cab Pick-up • 2009 Ford 12' Single-Axle Crew Cab Flatbed
 2008 Ford F-750 Single-Axle Flatbed • 2008 Ford F-550 Single-Axle Flatbed • (2) 2008 Ford F-550 Single-Axle Flatbeds
 2008 Ford F-250 XLT 4x4 Crew Cab Pick-up • 2008 Ford F-350 SD Van • 2008 Ford 12' Single-Axle Crew Cab Flatbed
 2008 Ford F-250 XL SD 8' Single-Axle 4x4 Crew Cab Pick-up • 2008 Ford F-250 SL SD 4x4 Extended Cab Pick-up
 2008 Ford 4x4 Crew Cab Service Truck with Gas Air Compressor • 2008 Ford F-250 XLT 4x4 Crew Cab Pick-up
 2008 Ford F-150 XLT 4x4 Crew Cab Pick-up • 2008 Ford F-250 XLT SD 4x4 Crew Cab Pick-up • 2008 Ford F-250 XL SD Extended Cab Flatbed
 (3) 2008 Ford F-550 XL SD 9' 4x4 Crew Cab Flatbeds • 2007 Ford F-250 XL SD 4x4 Pick-up • 2007 Ford 9' 4x4 Crew Cab Flatbed
 2006 Ford F-250 XLT SD 4x4 Crew Cab Pick-up • 2005 Ford 4x4 Extended Cab • 2004 Ford F-350 King Ranch Single-Axle 4x4 Pick-up
 2002 Ford F-550 XL SD 9' 4x4 Crew Cab Flatbed • 2001 Chevrolet Tahoe LT 4x4 SUV

DUMP TRUCKS

(3) 2007 Mack CV713 Tandem-Axles





CEMENT TRUCK & SILO

2012 Mack/Beck GU713 11 cu. yd. Tri-Axle • 2013 Concrete Technologies 350P Tandem-Axle Mobile Stand-up Silo

DROP DECK TRAILERS

2007 Fontaine 48' Spread Tandem-Axle • 2000 Fontaine 48' Spread Tandem-Axle • 1999 Atoka 40' Tri-Axle Lowboy • 1999 X-L Spread Tandem-Axle

ROCK TRAILERS

(3) 2007 Load King Tandem-Axles



TRAILERS

(5) 2019 CTS BDT Tandem-Axle Belly Dumps (located in Coahoma, TX) • 2014 Troxell Transport • 2014 Troxell Tandem-Axle Vacuum Transport
2011 Troxell 5460 Gallon Transport • 2011 Troxell 5460 Gallon Tandem-Axle Transport • 2011 14' Gooseneck Hydraulic Swivel with CAT Diesel
2009 Dragon Tandem-Axle Transport • 2009 Eagle Tandem-Axle Transport • 2009 FWF Tandem-Axle Acid • 2009 Dragon Tandem-Axle Transport
(2) 2009 Eagle 133BBL Transports • 2008 Shopbuilt 25' Tri-Axle Gooseneck • 2008 Progressive Tandem-Axle Tank • 2007 Shopbuilt Transport
2007 American 15' Tandem-Axle Hydraulic Gooseneck Power Swivel with John Deere Diesel • (8) 2007/1994/1993/1981 Shopbuilt Transports
2006 Troxell Tandem-Axle Transport • 2005 Dragon Transport • 2003 V.E. Enterprises 5460 Gallon Vacuum Transport
2002 PJ 40' Tandem-Axle Gooseneck • 1997 Surepull 35' Tandem-Axle with Ramps • 1982 Cherokee Rack with Jib & Winch
1977 King 30' Tandem-Axle Gooseneck Float • 1975 Nabor 25' Tandem-Axle Float • 1974 MD 150BBL Tandem-Axle Transport
Interstate 20' Tandem-Axle Winch • (7) Assorted 20'/18'/16' Utility • (6) Manual BOP

DOG HOUSE TRAILERS

(8) 2009/2007/2006 Cargo Craft Tandem-Axle

AIR COMPRESSOR

2008 Lufkin Air Compressor Trailer with Sullair & Ariel CAT Diesel Compressors

PUMP SKIDS

(3) Gardner Denver with Detroit Diesel, Hydraulic & Fuel Tanks





ROUGH TERRAIN CRANE • MOTOR GRADERS • EXCAVATOR

FMC 15 Ton Rough Terrain Crane Model HSP-8015
Caterpillar Motor Grader Model 120D • Caterpillar Motor Grader Model 140H
2003 Caterpillar Excavator Model 320CL • Caterpillar 32" Hydraulic Thumb Bucket

CRAWLER TRACTORS • WHEEL LOADERS • LOADER BACKHOE

2005 Caterpillar Crawler Tractor Model D6NL • (2) Caterpillar Crawler Tractors Model D6RXL
Caterpillar Wheel Loader Model 938G • Caterpillar Wheel Loader Model 924 GZ • Caterpillar 100" G.P. Bucket
Case Loader Backhoe Model 480D

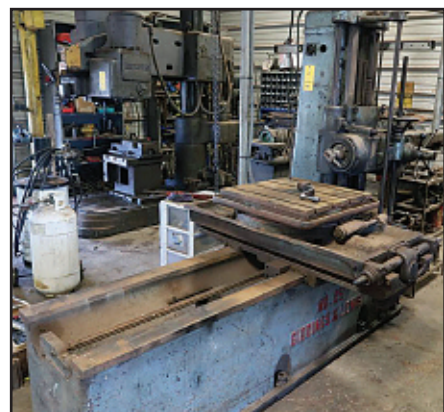
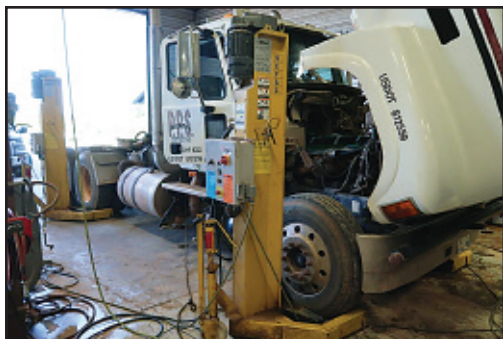
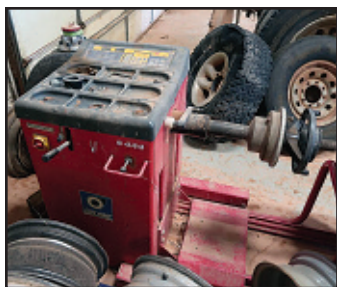
MUD TRUCK • SKID STEER LOADER • COMPACTORS

Terragator Mud Truck Model 1603
Caterpillar Skid Steer Loader Model 252B • 48" Forklift Attachment • Caterpillar Hydraulic Post Hole Auger
2016 Caterpillar Smooth Roller Compactor Model CS56B • 2012 Caterpillar Sheeps Foot Compactor Model CP56
Hypac 84" Compactor Model C855A • Pad Foot Plates

MISCELLANEOUS EQUIPMENT

Allis Chalmers 190XT Tractor with 72" Mower Deck • (3) Skidded Mud Pits • (2) Skidded Bird Baths • (2) 40' Hydraulic Catwalks
(3) Tri-Scope & 4-Post Derricks • 500BBL Mobile Frac Tank • (3) Warren/Caterpillar Light Towers • Case Skid Mounted Diesel Generator
30' (est.) 1/2 Mud Pit • 40' 1/4 Mud Pit





VEHICLE MAINTENANCE EQUIPMENT

Giviano Wheel Balancer • Butler/Hunter Tire Machine • CEMB Truck Tire Machine • Sefac 60,000 lb. Truck Lift • Norco Power Train Lift Table
Coolant Extractor • Arctic Pro A/C Service Machine • Toyota 4000 lb., 5000 lb. & 6000 lb. Forklifts • Welders • Welding Tables • Air Compressors
Repair Parts • Tong Test Machine • Battery Chargers • Shop Press • Hydraulic Torque Wrenches • Plasma Torches • Lathes • Mill
Giddings & Lewis No. 25 Horizontal Boring Mill • Radial Drill • Band Saw • Gensets • Inspection Equipment • Pressure Washer • Conex Boxes
Casing Tongs • Blast Cabinet • Enerpac Power Packs • Tool Chests • Slips • Elevators • Rigging Supplies

SALT WATER DISPOSAL WELLS

Equipment Located at (10) Assorted Salt Water Disposal Wells – Contact Barret at 224-927-5329 for More Information



105 Revere Drive, Suite C
Northbrook, Illinois 60062

www.pplauctions.com

WEBCAST AUCTION

By order of the
US Bankruptcy
Court:



**Longhorn
Companies**

300 N. Cemetery Road
Hennessey, Oklahoma 73742

WEBCAST AUCTION: Wed. September 16 10am CDT

INSPECTION: Tues. September 15 9:00 am - 4:00pm CDT

DRILLING, WATER HAULING & OILFIELD SERVICES COMPANY



INDUSTRIAL
AUCTIONEERS
ASSOCIATION



Machinery Dealers
National Association

**ATTENTION: PLANT MANAGER
OR MACHINERY BUYER**



New
2019



5 Available

WEBCAST AUCTION Longhorn Companies

WEBCAST AUCTION: Wed. Sept. 16 10:00am CDT

INSPECTION: Tues. September 15 9:00 am - 4:00pm CDT

Auction Terms & Conditions

REGISTRATION & BIDDING: Everything will be sold to the highest bidders for cash, in accordance with the auctioneer's normal "Terms of Sale", which are available at the site or by request at 224-927-5320. All bids are in US dollars. An 13% Buyer's Premium will be added to online bids.

Your bid is a contract: Place a bid only if you're serious about buying the item. If you are the high bidder, you will enter into a legally binding contract with PPL Auction.

PAYMENT: All successful Bidders agree to make full payment to PPL Auction at the conclusion of the sale. Only Bank Wire Transfer, Bank Check or Cashier's Check payable to PPL Auction will be accepted. Firm and personal checks accepted only if accompanied by a letter from your bank guaranteeing your funds. If you are using a wire transfer your bank may wire the funds the day after the sale. All sales are subject to sales and/or local taxes unless a signed exemption form is presented at the time of the purchase. Payment will be made in US dollars only.

VERIFY DESCRIPTIONS: Note: Although all information has been obtained from sources deemed reliable, the auctioneer and seller make no warranty or guarantee, expressed or implied, as to the accuracy of the information contained in the auction brochure, lot catalog or sale web pages.

Buyer agrees to accept assets purchased per standard auction terms, "AS IS, WHERE IS, WITH ALL FAULTS" WITHOUT ANY REPRESENTATION OR WARRANTY BY PPL AUCTION OR ANY OTHER PERSON. THERE ARE NO EXPRESSED OR IMPLIED REPRESENTATIONS OR WARRANTIES WITH RESPECT TO THE ASSETS INCLUDING, WITHOUT LIMITATION, ANY REPRESENTATION OR WARRANTY REGARDING THE MERCHANTABILITY OR FITNESS FOR ANY PARTICULAR PURPOSE.

REMOVAL & RIGGING: Removal and Rigging is the responsibility of the buyer. Anyone, either a buyer or a rigger, who uses a powered vehicle to remove anything from the auction site, will be required to present a certificate of insurance. Removal may begin when the auction has completed and payment in full has been made.

ISSUANCE OF TITLE: Titles relative to titled assets purchased will be mailed to the purchaser's address on file after payment is received and cleared.

All invoices must be paid in full at end of auction. Any merchandise not paid for at this time will be considered abandoned and may be resold by auctioneer, any loss incurred in the resale to be borne by the original buyer.

ONLINE BIDDING ONLY



ON-LINE BIDS SUBJECT TO 13% BUYER'S PREMIUM

Scan
with
your
phone
to link
to our
website



105 Revere Drive, Suite C
Northbrook, Illinois 60062

Phone: 224.927.5320
sales@pplauctions.com

www.pplauctions.com



2020 Dunlap Street
Cincinnati, Ohio 45214

Phone: 513.241.9701
info@cia-auction.com

www.cia-auction.com