

# WEBCAST AUCTION

Bid Online in Real Time, No On-Site Bidding – Please call 224-927-5320 with any questions

## America's Largest Rotary Pump Rebuilder

Plant  
Closed:



**F.H. AYER**  
**MANUFACTURING CO.**

2015 S. Halsted Street  
Chicago Heights, IL 60411

**WEBCAST AUCTION: Wednesday, October 14 10:00am CDT**

**INSPECTION: Tuesday, October 13 9:00 am - 4:00 pm CDT**

CNC Turning Centers • CNC Vertical Machining Center • Lathes • Horizontal Boring Mills  
Vertical Turret Lathe • Mills • Drills • Keyseater • Portable Machining System • Band Saws  
Metalizing Equipment • Tap Disintegrator • Welders • Straightening & Wheel Presses  
Air Compressors • Manlift • Forklifts • Inspection Equipment • Perishable Tooling  
Factory Equipment • Trucks • Real Estate • Huge Intellectual Property Offering • MORE!



Late Model Trucks

### REAL ESTATE AT AUCTION



6% Buyer's Premium on Real Estate

### INTELLECTUAL PROPERTY

Largest Ever Collection of Drawings & Specs Regarding Rotary Industrial Pumps



[www.pplauctions.com](http://www.pplauctions.com)

105 Revere Drive, Suite C  
Northbrook, Illinois 60062

Phone: 224.927.5320

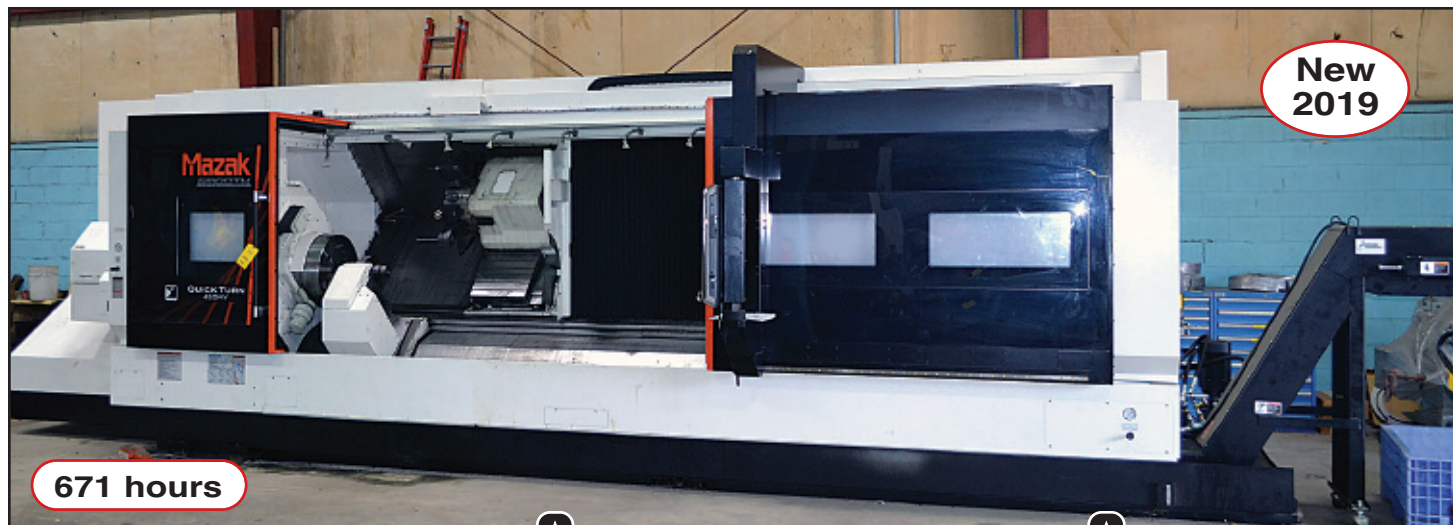
[sales@pplauctions.com](mailto:sales@pplauctions.com)

**BID ONLINE ONLY AT**

[proxibid](http://proxibid.com) [BidSpotter.com](http://BidSpotter.com)

18% Online Buyer's Premium





## CNC TURNING CENTERS

**Mazak Smooth Technology 33" x 83" CNC Turning Center Model Quick Turn 450MY, S/N 296661 (2019),**  
2000 RPM, 21" 3-Jaw Chuck, Tool Eye, 12-Position Live Tool Turret, Steady Rest, Hydraulic Tailstock, Coolant, Chip Conveyor

**Toolmex FAT 25" x 118" Manual Plus CNC Lathe Model TUR 630SC X 3000, S/N 150531 (2015),**  
1800 RPM, 20" 4-Jaw Chuck, Carriage with T-Slot Cross Slide, Tool Post, Threading, Tailstock, Coolant,  
Siemens Sinumerik 828D Basic T CNC & Manual Controls

**Mazak Quick Turn 32" x 118" CNC Turning Center Model Nexus 350-2MY, S/N 197908 (2007),**  
16" 3-Jaw Chuck, 12-Position Live Tooling Turret, Tailstock, Chip Conveyor, Coolant, Mazak Voice Advisor CNC Control

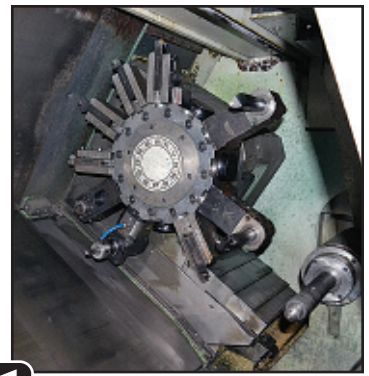
proxibid  
BidSpotter.com





**New  
2007**

**29,120 hours**



**Great Opportunity to bid on  
Modern Mazak Machines with Low Hours  
WEBCAST AUCTION: October 14 at 10:00am CDT**



**New  
2011**

**15,828 hours**

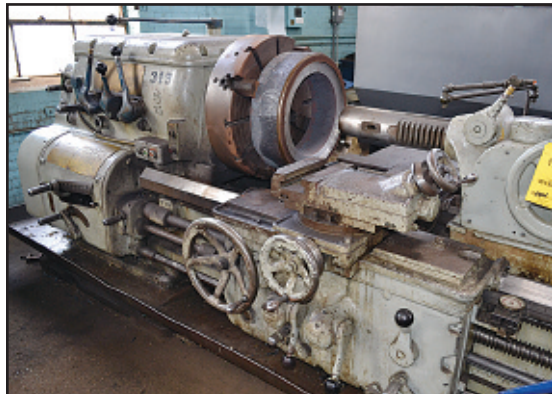


### **CNC VERTICAL MACHINING CENTER**

**Mazak 4-Axis CNC Vertical Machining Center Model Nexus 700E-II/50, S/N 228782 (2011),**  
6000 RPM, 27.5" x 80" Work Table, 24-Position ATC, 80" X-Axis, 27.6" Y-Axis, 28.3" Z-Axis, 12" Horizontal 4th Axis, Coolant,  
Mazatrol Matrix Nexus Voice Advisor Control

**(4) Assorted 12" x 32" Drilled & Tapped Sub-Tables**





## Large Capacity Lathes - (2) 124", (1) 130", (1) 240" Between Centers



### LATHES • VERTICAL TURRET LATHE

**Toolmex FAT 28" x 124" Geared Head Engine Lathe Model TUR 710 X 3000**, S/N 120011 (2012), 1400 RPM, 20" 4-Jaw Chuck, Carriage with Cross Slide, Taper, Threading, Tailstock, Coolant, Pan Bed, Newall DRO

**Axelson 28" x 80" Geared Head Engine Lathe Model A25**, S/N 2477, 555 RPM, 24" 4-Jaw Chuck, Carriage with Cross Slide, Taper, Threading, Tailstock, Coolant, Pan Bed

**LeBlond Regal 24" x 240" Geared Head Engine Lathe**, S/N 2H847, 5" Spindle Bore, 900 RPM, 24" 4-Jaw Chuck, Carriage with Cross Slide, Taper, Threading, Tailstock, Steady Rests, Pan Bed, Coolant

**Toolmex/TUR 630A 24" x 130" Double Chuck Geared Head Engine Lathe**, S/N 48761, 1400 RPM, 16" 3-Jaw & 4-Jaw Chucks, Carriage with Cross Slide, Taper, Threading, Tailstock, Steady Rests, Coolant, Pan Bed, Newall DRO

**Tarnow 22" x 124" Geared Head Engine Lathe Model TUJ50M/120**, S/N 3086 (1996), 16" 4-Jaw Chuck, Carriage with Cross Slide, Taper, Threading, Coolant, Newall DRO

**LeBlond Regal 16" x 60" Geared Head Engine Lathe**, S/N 80-4764, 1800 RPM, 10" 6-Jaw Chuck, Carriage with Cross Slide, Taper, Threading, Tailstock, Coolant

**LeBlond 60" x 96" Geared Head Engine Lathe**, S/N N/A, 60" 4-Jaw Chuck, Carriage with Cross Slide, Tailstock, Steady Rest

**Dufom 36" Vertical Turret Lathe**, S/N 6873 (1979), 36" 4-Jaw Chuck, 40" Under Rail, Pendant Control

proxibid BidSpotter.com





## HORIZONTAL BORING MILLS • VERTICAL TURRET LATHE

**Giddings & Lewis 5" Horizontal Boring Mill Model 70-65-T3X**, S/N 410-4-66 (1963), 60" x 122" Work Table, 48" x 60" Air Lift Rotary Table, 60" (est.) Vertical, 3-Axis DRO, with Non-Functioning Tape Reader, Manual Controls, Outboard Support, Right Angle Head

**Union 5" Horizontal Boring Mill**, S/N 8647,

70-5/8" x 78-1/2" Rotary Table, 108" Vertical, Facing Head, 3-Axis DRO, Outboard Support, Pendant Controls

**Tos Varnsdorf 3" Horizontal Boring Mill**, 1400 RPM, 39.5" x 44" Manual Rotary Table, Coolant, Trak 3-Axis DRO, Pendant Control

Assorted **Long Boring Bars** • Assorted **Heavy Duty Angle Plates, V-Blocks & Fixtures**

## MILLS • DRILLS • KEYSEATER

**Bridgeport 2 HP Variable Speed Vertical Mill**, S/N HJ321571, 9" x 49" Power Feed Work Table, Acu-Rite DRO

**Cincinnati Horizontal Mill No. 2MI**, S/N 2J2P6E-23, 500 RPM, 10" x 54" Work Table, Power Overarm with Vertical 1500 RPM Head, Coolant

**Bridgeport 1 HP Vertical Mill**, S/N N/A, 9" x 42" Power Feed Work Table with Vertex Horizontal/Vertical Indexer, DRO

**Bridgeport 1 HP Vertical Mill**, S/N J27319, 9" x 42" Power Feed Work Table

**Fosdick 45" Arm x 12" (est.) Column Sensitive Radial Drill**, S/N N/A, 24" x 48" Work Table, Power Table Elevation, T-Slot Base

**Clausing 20" Variable Speed Drill Press**, with Crank Adjustable Work Table

**Delta 20" Drill Press**, with Crank Adjustable T-Slot Work Table • **Craftsman 16" Drill Press**

**Morrison 1-1/4" Keyseater Model K**, S/N K904740, with Accessories

## PORTABLE MACHINING SYSTEM • BAND SAWS

**Climax Portable Machining System Model BB500**, with Case & Accessories

**Johnson Amada 20" Variable Speed Vertical Band Saw Model VAC-500**, S/N N/A, 22" Round Vacuum Indexable Work Table, Butt Welder

**HEM Horizontal Band Saw Model Cyclone**, S/N 1144212, Power Clamp, Coolant, Pendant Control

proxibid BidSpotter.com





**Webcast Auction October 14**



## **METALIZING EQUIPMENT • TAP DISINTEGRATOR • WELDERS**

Betts & Bridgeford 48" x 240" Metalizing Lathe, S/N 4989, with Solid State Waterfall Dust Collector

Tafa Portable Metalizing Gun Model 30-8B35, with Dual Feed Gun • 48" x 30" x 30" Deep Metalizing Spray Booth, with Power Shaft Rotator

Metco Plasma Spray Gun Model M3, Power Supply with Auto Control Module & Gas System

Electro Arc Portable Tap Disintegrator Model 2S, S/N 14503, with 2-Way Adjustable Support Arm & Cart

Miller 300 Amp Portable Arc Welder Model Goldstar 300SS, with Cables & Clamps • Lincoln Portable Power MIG Welder Model 140C

## **STRAIGHTENING & WHEEL PRESSES • AIR COMPRESSORS**

Ayer 20' (est.) Sliding Head Hydraulic Shaft Straightening Press, with Remote Hydraulics • Ayer 100 Ton Horizontal Wheel Press

Quincy Rotary Air Compressor Model QS-1245ACA21B, S/N 99451 (66,817 hours)

Quincy 25 HP Dual 2-Stage Skid Mounted Reciprocating Air Compressor, with Receiver Tank

[proxibid](http://proxibid.com) [BidSpotter.com](http://BidSpotter.com)

## **MANLIFT • FORKLIFTS • INSPECTION EQUIPMENT**

MEC 700 lb. Electric Manlift Model 3247ES, S/N 10001834 • Yale 10,000 lb. LP Forklift Model GP-100-SBS-115, S/N P-239469

Toyota 5000 lb. LP Forklift Model 42-5FG25, S/N 405FG25-40354, 2-Stage Mast

Faro Arm Portable Measuring Machine (2004), with Granite Top Storage Cart, Software, Computer & Case

Bruker Titan S1-500 Material Analysis Gun (06/2020) • Wilson Rockwell Hardness Tester Model 3JR, S/N 4030

Large Micrometers & Calipers • 36" x 60" Granite Surface Plate, w/Steel Base • (3) Proftechnik Rotalign Ultra Shaft Alignment Lasers

## **PERISHABLE TOOLING • FACTORY EQUIPMENT**

Perishable Tooling including:

Drills, Taps, Carbide Inserts, Tool Holders, Lathe Tools, Boring Bars, CNC Tool Holders, Milling Cutters, Storage Cabinets

Factory Equipment including:

Machine Vises, Surface Plates, Shop Benches, Tooling Cabinets, Tool Carts, Saw Horses, Hose Reels, Shop Carts, Maintenance Equipment, Scrap Carts, Banding Equipment, Scales, Lifting Equipment, Crane Scale, Power Tools, Stacking Parts Tubs, Flammable Storage Cabinets

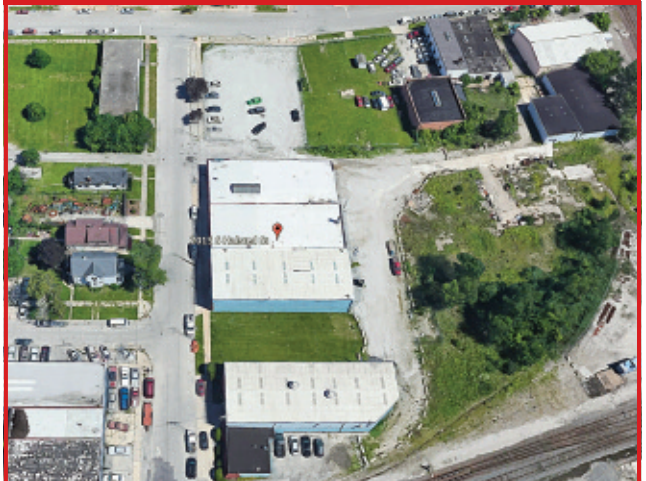




**Late Model Trucks**

## REAL ESTATE AT AUCTION

to be offered in its entirety and in appropriate parcels at 12:00 noon



**2015 S. Halsted Street Chicago Heights, Illinois 60411**

- (2) 14' - 26' Clear Height Buildings totaling 32,300 sq. ft. with Overhead Cranes
- 2.5 Acres Land Area including Parking Lot Adjacent to Buildings
- Storage Yard Across the Street
- Additional Warehouse Storage Building
- Ample Office Space

6% Buyer's Premium on Real Estate

Call David Muslin at 847-343-4239 for More Information

## INTELLECTUAL PROPERTY

**Bid on Largest Ever Collection of Drawings & Specifications for Rebuilding Rotary Industrial Pumps to Original Condition**

This treasure trove of information, accumulated during the 106 year history of F.H. Ayer Mfg. Co. while serving their customers, is present in a computer stored library and additional books.

Call Joe Prudden at 630-774-6661 for More Information

## MISCELLANEOUS EQUIPMENT

**Dake 75 Ton Adjustable Bed & Ram H-Frame Hydraulic Shop Press**

**Spanco 2 Ton Adjustable Aluminum Portable Gantry, with Electric Chain Hoist**

**Vacu-Blast Corporation 100 lb. Portable Sand Blast Pot, with Hose & Vacuum • Pangborn 2-Hole Reach-in Sand Blast Cabinet**

**Pro Finish 2-Hole Reach-in Blast Cabinet Model PF2636, S/N 2028**

**Brown & Sharpe 8" x 24" Hydraulic Surface Grinder, S/N N/A, Permanent Magnetic Chuck, Coolant • Cataract Bench Lathe, with Carriage**

**H-Frame Adjustable Ram & Bed Air/Hydraulic Shop Press • Famco No. 3 Floor Type Compound Mandrel Press**

**Atlas Floor Type Compound Mandrel Press • Custom Portable Line Burning Table, with 15' (est.) Track & Bug-O Line Burner**

**Hot Caustic Cleaning Tank, with Exhaust • Valley Equipment Co. 6-Barrel Fluid Distribution Station, with Rack & Pump**

**8' x 12' (est.) Forkliftable Portable Office**

**Assorted Equipment including:**

Abrasive Cut-off Saw, Worcester Double End Drill Pointer, Ex-Cell-O Double End Face & Edge Grinder, Double End Edge & Wire Brush Grinder, Heavy Duty Double End Snag Grinder, Double End Tilting Table Tool Grinder, Wilton 6" x 12" Belt/Disc Sander with Dual Tilt Table, 8" Double End Pedestal Grinder, Cincinnati 2 HP Double End Grinder/Wire Brush, 3" Belt Sander, Dewalt 14" Abrasive Chop Saw, (4) MSC Screw & Plumbing Cubby-Hole Cabinets & Drawers, (2) Assorted Induction Bearing Heaters, (2) Acetylene Torch Sets, Dewalt Compound Miter Saw with Bench, (2) Assorted Parts Washing Stations

## TRUCKS

**2020 Ford F-250 XL 4x4 Extended Cab Pick-up Truck, VIN 1FT7X2B66LEC98858, with (3) Tool Boxes, 2,022 miles indicated (#15)**

**2019 Ford F-250 Lariat Super Duty 4x4 Crew Cab Pick-up Truck, VIN 1FT7W2B62KEG68124, with (3) Tool Boxes, 23,444 miles indicated (#18)**

**2019 Ford F-150 XL Extended Cab Pick-up Truck, VIN 1FTEX1CB9KCC08566, 50,372 miles indicated (#03)**

**2018 Ford F-150 XL Extended Cab Pick-up Truck, VIN 1FTEX1CP9JKF88535, 32,512 miles indicated (#17)**

**2017 Ford F-350 Stake Bed Truck, VIN 1FDRF3G61HED28331, 107,530 miles indicated (#2)**

**2016 Ford F-250 Lariat Super Duty 4x4 Extended Cab Pick-up Truck, VIN 1FT7X2B64GEB49208, w/(3) Tool Boxes, 137,232 miles indicated (#16)**

**2015 Ford F-350 Super Duty 4x4 Extended Cab Pick-up Truck, VIN 1FT8X3A68FEA38381, with (3) Tool Boxes, 84,588 miles indicated (#14)**

proxibid BidSpotter.com



105 Revere Drive, Suite C  
Northbrook, Illinois 60062

[www.pplauctions.com](http://www.pplauctions.com)

## AMERICA'S LARGEST ROTARY PUMP REBUILDER



New  
2019



New  
2015

## WEBCAST AUCTION



**F.H. AYER  
MANUFACTURING CO.**

2015 S. Halsted Street  
Chicago Heights, IL 60411

**WEBCAST AUCTION: Wed. October 14 10am CDT**

**INSPECTION: Tues. October 13 9:00 am - 4:00 pm CDT**



INDUSTRIAL  
AUCTIONEERS  
ASSOCIATION



Machinery Dealers  
National Association

**ATTENTION: PLANT MANAGER  
OR MACHINERY BUYER**

## WEBCAST AUCTION

**F.H. AYER MANUFACTURING CO.**

**WEBCAST AUCTION: Wed. Oct. 14 10:00am CDT**

**INSPECTION: Tues. October 13 9:00 am - 4:00 pm CDT**

### Auction Terms & Conditions

**REGISTRATION & BIDDING:** Everything will be sold to the highest bidders for cash, in accordance with the auctioneer's normal "Terms of Sale", which are available at the site or by request at 224-927-5320. All bids are in US dollars. An 18% Buyer's Premium will be added to online bids.

**Your bid is a contract:** Place a bid only if you're serious about buying the item. If you are the high bidder, you will enter into a legally binding contract with PPL Auction.

**PAYMENT:** All successful Bidders agree to make full payment to PPL Auction at the conclusion of the sale. Only Bank Wire Transfer, Bank Check or Cashier's Check payable to PPL Auction will be accepted. Firm and personal checks accepted only if accompanied by a letter from your bank guaranteeing your funds. If you are using a wire transfer your bank may wire the funds the day after the sale. All sales are subject to sales and/or local taxes unless a signed exemption form is presented at the time of the purchase. Payment will be made in US dollars only.

**VERIFY DESCRIPTIONS:** Note: Although all information has been obtained from sources deemed reliable, the auctioneer and seller make no warranty or guarantee, expressed or implied, as to the accuracy of the information contained in the auction brochure, lot catalog or sale web pages.

Buyer agrees to accept assets purchased per standard auction terms, "AS IS, WHERE IS, WITH ALL FAULTS" WITHOUT ANY REPRESENTATION OR WARRANTY BY PPL AUCTION OR ANY OTHER PERSON. THERE ARE NO EXPRESSED OR IMPLIED REPRESENTATIONS OR WARRANTIES WITH RESPECT TO THE ASSETS INCLUDING, WITHOUT LIMITATION, ANY REPRESENTATION OR WARRANTY REGARDING THE MERCHANTABILITY OR FITNESS FOR ANY PARTICULAR PURPOSE.

**REMOVAL & RIGGING:** Removal and Rigging is the responsibility of the buyer. Anyone, either a buyer or a rigger, who uses a powered vehicle to remove anything from the auction site, will be required to present a certificate of insurance. Removal may begin when the auction has completed and payment in full has been made.

**ISSUANCE OF TITLE:** Titles relative to titled assets purchased will be mailed to the purchaser's address on file after payment is received and cleared.

All invoices must be paid in full at end of auction. Any merchandise not paid for at this time will be considered abandoned and may be resold by auctioneer, any loss incurred in the resale to be borne by the original buyer.

### ONLINE BIDDING ONLY



ONLINE BIDS SUBJECT TO 18% BUYER'S PREMIUM

Scan  
with  
your  
phone  
to link  
to our  
website



105 Revere Drive, Suite C • Northbrook, Illinois 60062

Phone: 224.927.5320 • Fax: 224.927.5311

Email: [sales@pplauctions.com](mailto:sales@pplauctions.com)

[www.pplauctions.com](http://www.pplauctions.com)