



**CUSHMAN &
WAKEFIELD**

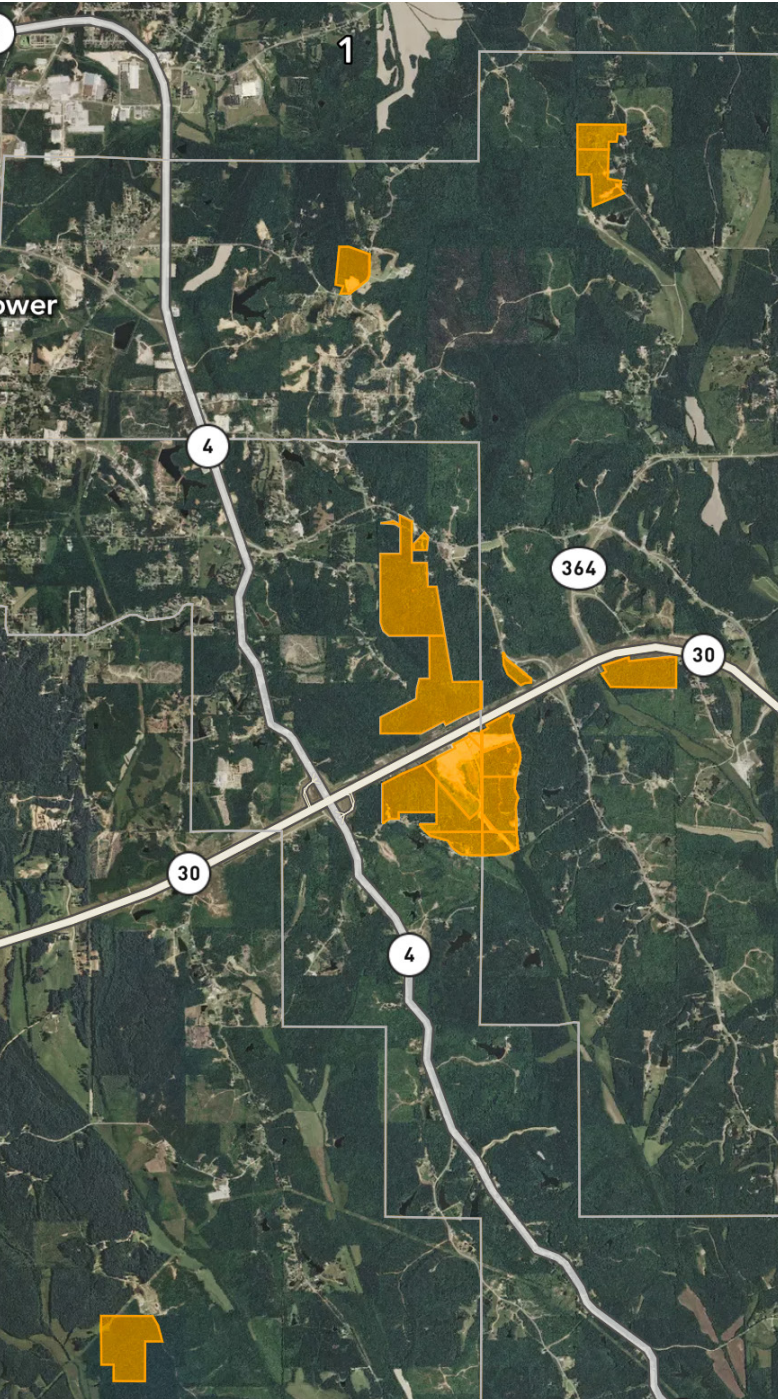


**COMMERCIAL
ADVISORS**

FOR SALE

~512 ACRES LAND WITH IMPROVEMENTS

AUCTION DATE: JUNE 12, 2020
Booneville, Prentiss County, MS



Industrial Sites For Sale

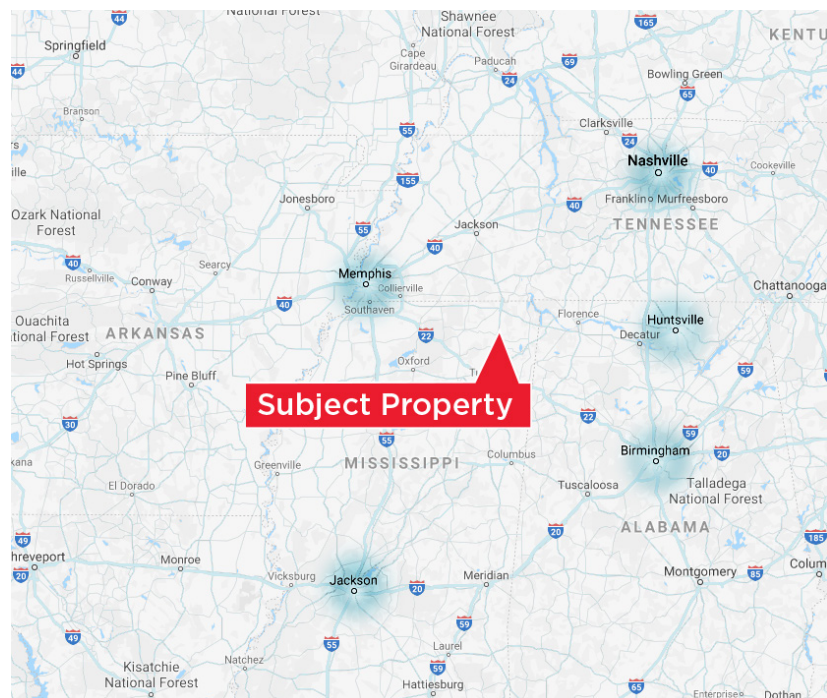
~512 Acres Available

Property Highlights

- ~512 total acres along MS Highway 30 in Booneville
- Land and equipment for sale at auction June 12, 2020: details [HERE](#)
- 44,777 SF of improvements including shop building and office space
- Former logging operation with timber land

Parcels For Sale (by PPIN Number):

1910; 3362; 3494; 3502; 3514; 4979; 6335; 6351; 8216; 8255; 8257; 8275; 11020; 11835; 13703; 19177; 20644; 20652; 20956; 20961



Kemp Conrad, SIOR, Dual Designation
Principal
901 273 2359
kconrad@commadv.com

Owen Mercer
Associate Vice President
901 273 2343
omercer@commadv.com

Laura Meanwell
Associate Broker
901 246 1230
lmeanwell@commadv.com

5101 Wheelis Drive
Suite 300
Memphis, TN 38117
Main: 901 366 6070
www.commadv.com

Alex Mazer
Vice President
224 927 5329
alex@pplgroupllc.com

Greg Hengehold
513 520 7636
greg@myronbowling.com

Independently Owned and Operated / A Member of the Cushman & Wakefield Alliance

Cushman & Wakefield Copyright 2020. No warranty or representation, express or implied, is made to the accuracy or completeness of the information contained herein, and same is submitted subject to errors, omissions, change of price, rental or other conditions, withdrawal without notice, and to any special listing conditions imposed by the property owner(s). As applicable, we make no representation as to the condition of the property (or properties) in question. 050520



**CUSHMAN &
WAKEFIELD**

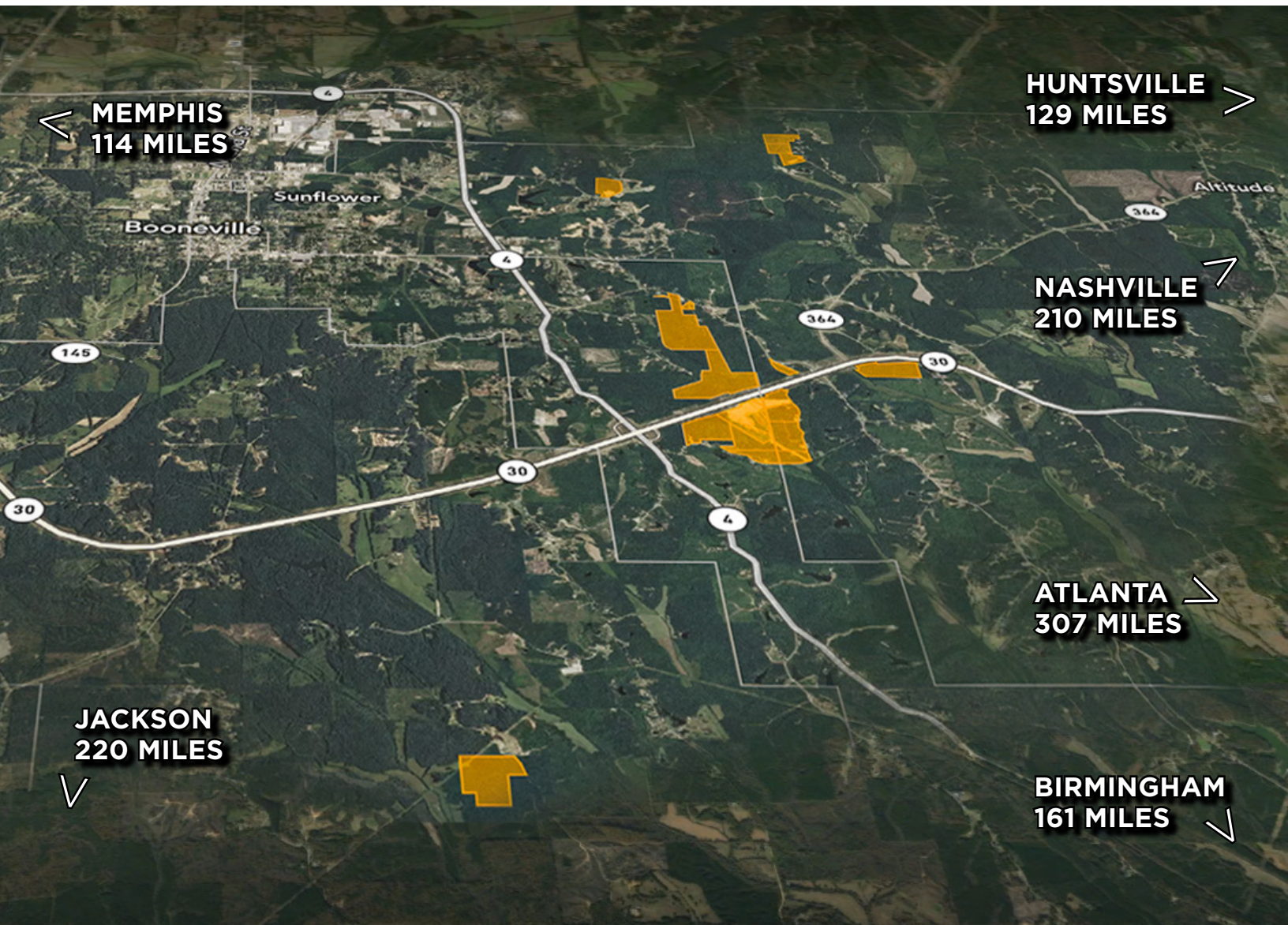


**COMMERCIAL
ADVISORS**

FOR SALE

**~512 ACRES LAND
WITH IMPROVEMENTS**

AUCTION DATE: JUNE 12, 2020
Booneville, Prentiss County, MS



Land and equipment for sale at auction
June 12, 2020: details [HERE](#)

**Kemp Conrad, SIOR, Dual
Designation**
Principal
901 273 2359
kconrad@commadv.com

Owen Mercer
Associate Vice President
901 273 2343
omercer@commadv.com

Laura Meanwell
Associate Broker
901 246 1230
lmeanwell@commadv.com

5101 Wheelis Drive
Suite 300
Memphis, TN 38117
Main: 901 366 6070
www.commadv.com

Alex Mazer
Vice President
224 927 5329
alex@pplgroupllc.com

Greg Hengehold
513 520 7636
greg@myronbowling.com

Independently Owned and Operated / A Member of the Cushman & Wakefield Alliance

Cushman & Wakefield Copyright 2020. No warranty or representation, express or implied, is made to the accuracy or completeness of the information contained herein, and same is submitted subject to errors, omissions, change of price, rental or other conditions, withdrawal without notice, and to any special listing conditions imposed by the property owner(s). As applicable, we make no representation as to the condition of the property (or properties) in question. 050520