



ONLINE TIMED AUCTION

FACILITY CLOSURE: ALL ITEMS MUST BE SOLD

FEATURING: (13) OVERHEAD BRIDGE CRANES UP TO 40 T. X 80' SPAN; AMERICAN MDL. 9260 125 T. CRAWLER CRANE; CRANE BOOMS; (2) BERTSCH PLATE BENDING ROLLS UP TO 160" X 2.25" CAP.; PLUS WELDING POWER SOURCES, WIRE FEEDERS; PLASMA CUTTERS; POLARIS 4WD VEHICLES; FANS; PLATE DOGS; MORE!



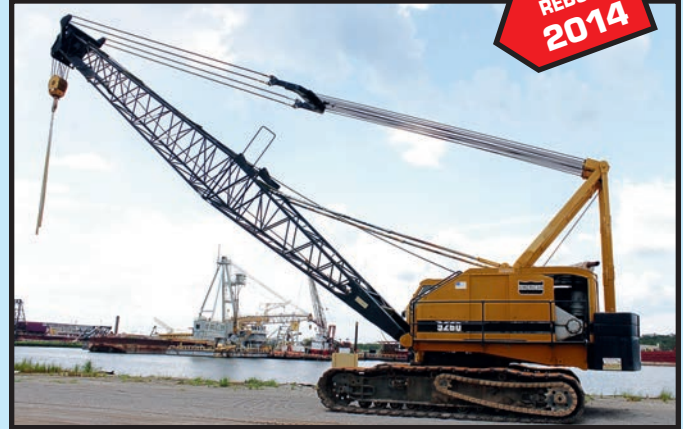
(1 OF 3) 80' SPAN ZENAR OVERHEAD BRIDGE CRANES



ZENAR 30 T. CAP. X 80' SPAN OVERHEAD BRIDGE CRANE
W/ZENAR MILWAUKEE 20 T. CAP. MAGNETIC SHEET LIFT SYSTEM



Read Partial Terms and Conditions on Back Page of Brochure



AMERICAN MDL. 9260 CRAWLER CRANE

At the Premises of
DANOS, LLC
2546 STATE ROAD 662
MORGAN CITY,
LOUISIANA 70380
(See Directions on Back Page)

**TUESDAY,
OCTOBER 15
BIDS START
CLOSING AT
10:00 A.M.**

ONLINE BIDDING: YOU MUST REGISTER IN ADVANCE FOR ONLINE BIDDING AT THIS AUCTION. Go to www.pmi-auction.com and click on BidSpotter.com on our calendar page for this auction sale.

INSPECTION: Monday, October 14,
9:00 A.M. to 4:00 P.M.

**18% BUYER'S
PREMIUM
WILL APPLY**

SAMPLE
VIEW OF
LARGE
QUANTITY
CRANE
RUNWAYS



BERTSCH
160" X
2-1/4"
PLATE
BENDING
ROLL

Sale Conducted By:

PLANT & MACHINERY INC.

AUCTIONEERS • APPRAISERS • LIQUIDATORS • REAL ESTATE

1304 Langham Creek Drive, Suite 454, Houston, Texas 77084

PHONE: (713) 691-4401

FAX: (713) 672-7905

E-MAIL: pmi@pmi-auction.com • WEBSITE: www.pmi-auction.com

HOUSTON • DALLAS • ST. LOUIS

In Conjunction With:


www.pplauction.com

105 Revere Drive, Suite C
Northbrook, IL 60062
Phone: 224-927-5320
Fax: 224-927-5311



**ZENAR
30 T. CAP.
X 80' SPAN
OVERHEAD
BRIDGE
CRANE
W/ZENAR
MILWAUKEE
20 T. CAP.
MAGNETIC
SHEET LIFT
SYSTEM**



**ZENAR 20 T. CAP. W/5 T. AUX. X 80' SPAN
OVERHEAD BRIDGE CRANE**



**CRANE MANN 40 T. CAP. X 73'-11-1/4" SPAN
OVERHEAD BRIDGE CRANE**



OMI 5 T. X 46'-5-3/4" SPAN SINGLE LEG GANTRY CRANE SYSTEM

OVERHEAD BRIDGE CRANES

CRANE MANN 40 T. X 73'-11-1/4" SPAN, dual box beam, top riding, pendant control (Asset No. CH3344 – Location: Pipe Shop).

ZENAR 30 T. X 80' SPAN, dual box beam, top riding, Zenar Milwaukee 20 T. cap. magnetic sheet lift system, radio control, S/N 8123 (Asset No. CH3233 – Location: Fab Shop – South Bay).

(2) ZENAR 20 T. (w/5 T. AUX.) X 80' SPAN, pendant control, dual box beam, top riding (Asset No. CH3235), S/N 8124 (Asset No. CH3234) (Location: Fab Shop – South Bay).

(2) GAFFEY 20 T. X 73'-11-1/4" SPAN, dual box beam, top riding, pendant control (Asset No.'s. CH3341 and CH3343 – Location: Pipe Shop).

LANDEL 20 T. (w/5 T. AUX.) X 71'-4" SPAN, pendant control, dual box beam, top riding (Asset No. CH3230 – Location: Fab Shop – North Bay).

LANDEL 20 T. X 71'-4" SPAN, pendant control, dual box beam, top riding (Asset No. CH3231 – Location: Fab Shop – North Bay).

(3) LANDEL 20 T. X 44'-7-1/2" SPAN, dual I-beam, top riding, pendant control, S/N A758 (Asset No. CH3208), S/N A1209, S/N A1208 (Asset No. CH3206) (Location: Building K-1).

SHAWBOX 15 T. X 71'-4" SPAN, pendant control, dual box beam, top riding (Asset No CH3227 – Location: Fab Shop – North Bay).

SHAWBOX 10 T. X 71'-4" SPAN, pendant control, dual box beam, top riding (Asset No. CH3226 – Location: Fab Shop – North Bay).

KRANCO 10 T. X 44'-7-1/2" SPAN, single girder, top riding bridge, underslung hoist, pendant control, S/N 8271 (Asset No. CH3321 – Location: Building K-1).

OVERHEAD CRANE RUNWAYS

APPROX. 700' DUAL I-BEAM, w/rail (Location: Fab Shop – North Bay).

APPROX. 700' DUAL I-BEAM, w/rail (Location: Fab Shop – South Bay).

APPROX. 550' DUAL I-BEAM, w/rail (Location: Building K-1).

APPROX. 325' DUAL I-BEAM, w/rail (Location: Pipe Shop).

GANTRY CRANE SYSTEM

OMI 5 T. X 46'-5-3/4" SPAN SINGLE LEG, approx. 15' under rail, pendant control, single I-beam w/underslung hoist, includes approx. 225' of runway and floor rail, S/N A2404 (Asset No. CH3236 – Location Fab Shop – South Bay).

**SAMPLE
VIEW OF
LARGE
QUANTITY
CRANE
RUNWAYS**



INSPECTION: Monday, October 14, 9:00 A.M. to 4:00 P.M.



AMERICAN
MDL. 9260
CRAWLER CRANE



(6) BOOM SECTIONS FOR AMERICAN MDL. 9260 CRANE

**TUESDAY, OCTOBER 15
BIDS START CLOSING AT 10:00 A.M.**

**DON'T
MISS
THIS
SALE!**



AMERICAN
MDL. 9260
CRAWLER CRANE

CRAWLER CRANE & CRANE ACCESSORIES

AMERICAN 125 T. CAP. MDL. 9260, rebuilt 2014, approx. 50' boom, S/N GS18128 (Asset No. 1288 – Location: Yard).

(6) MDL. 77 HEAVY BOOM SECTIONS, (2) 50', (1) 40' and (3) 10', for American Mdl. 9260 Crawler Crane (Location: Yard).

FLY JIB, for American Mdl. 11250 "Skyhorse" type crawler crane (Location: Yard).

HYDRAULIC IRONWORKER

GEKA MDL. HYDRACROP 100/A, 100 T. punching cap. (Location: Fab Shop – South Bay).

ROTARY SCREW AIR COMPRESSOR

SULLAIR, 300 HP motor (replaced 6 months ago), air cooled, skid mtd., S/N 003-53402 (Asset No. AU3147 – Location: Compressor Building).

REFRIGERATED AIR DRYER

GARDNER DENVER SERIES 1500, S/N RNC1500A4BF-HRT (Asset No. 1096 – Location: Compressor Building).

MISCELLANEOUS PLANT SUPPORT EQUIPMENT

MILLER AND LINCOLN WELDING POWER SOURCES AND WIRE FEEDERS; KEEN ROD OVENS; MILLER AND HYPER THERM PORTABLE PLASMA CUTTERS; POLARIS 4WD VEHICLES; SHOP FANS; PLATE DOGS; NATURAL GAS SHOP HEATERS; MORE!



SULLAIR 300 HP ROTARY SCREW AIR COMPRESSOR



GEKA MDL. HYDRACROP 100/A IRONWORKER

LARGE CAPACITY INITIAL PINCH PLATE BENDING ROLLS

BERTSCH 160" X 2-1/4", #30, new 1975, 30" lower rolls on 32" CC, 8" max. opening, 150 HP main drive, 60 HP/2-spd. rear adj., hyd. drop end, Mdl. B-150 hyd. power plate feed, 19", 24", and 29" dia. Chrome-nickel-moly interchangeable top rolls, roll position indicators, S/N M-10274.

BERTSCH 120" X 1-5/8", #20, new 1974, 28-1/2" lower rolls on 23-1/2" CC, 6-1/2" max. opening, 75 HP main drive, 40 HP-2-speed rear adj., hyd. drop end, 12", 15", and 19-1/2" dia. Chrome-nickel-moly interchangeable top rolls, roll position indicators, S/N M-10274.

NOTE: Original build sheets and capacity charts for these rolls are available on our website.



BERTSCH 160" X 2-1/4" PLATE BENDING ROLL

ONLINE BIDDING: YOU MUST REGISTER IN ADVANCE FOR ONLINE BIDDING AT THIS AUCTION. Go to www.pmi-auction.com and click on BidSpotter.com on our calendar page for this auction sale.

PLANT & MACHINERY INC.

AUCTIONEERS • APPRAISERS • LIQUIDATORS • REAL ESTATE

P.O. Box 218568
Houston, TX 77218-8568

DATED MATERIAL - PLEASE DELIVER



**PUBLIC
INVITED**

**TUESDAY, OCTOBER 15
BIDS START CLOSING
AT 10:00 A.M.**



FACILITY CLOSURE: ALL ITEMS MUST BE SOLD

**FEATURING: (13) OVERHEAD BRIDGE CRANES
UP TO 40 T. X 80' SPAN; AMERICAN MDL. 9260
125 T. CRAWLER CRANE; CRANE BOOMS;
(2) BERTSCH PLATE BENDING ROLLS UP TO 160"
X 2.25" CAP.; PLUS WELDING POWER SOURCES,
WIRE FEEDERS; PLASMA CUTTERS;
POLARIS 4WD VEHICLES; FANS;
PLATE DOGS; MORE!**

**ATTENTION: PLANT MANAGER
OR EQUIPMENT BUYER**

**Presorted
First Class Mail
U.S. Postage
PAID
Eugene, Oregon
Permit No. 17**



DIRECTIONS

FROM LOUIS ARMSTRONG NEW ORLEANS INT'L AIRPORT: Exit airport area and turn right onto US Highway 61 N/Airline Drive. Proceed westward for approx. 4 miles. Take the exit for I-310 S/Boutte. Proceed approx. 9 miles south on I-310 S and take US-90 W exit towards Houma. Proceed on US-90 W approx. 48 miles. Take Exit 182 for LA-662/Business 90 and proceed approx. 1/2 mile. At the bottom of the ramp, turn left onto US Business 90 West and proceed approx. 7/10 mile to the stop sign. Then proceed straight ahead across the highway to where it dead ends at the "T". Turn right and proceed 1/2 mile to the next stop sign and turn left. The equipment location headquarters will be on your right, 2546 State Road 662, Morgan City, LA 70380. Proceed past guard gate to the administration building. Look for visitor sign

UNABLE TO ATTEND?

Bid on-line in real time at **BidSpotter.com**
TO PARTICIPATE YOU MUST:

1. Register at www.BidSpotter.com. Use the link to BidSpotter on PMI's website calendar. DO IT NOW.
2. Either send wire transfer, or, overnight delivery service a cashier's check deposit in the amount of \$3,000 (U.S. Bidders) or \$10,000 (Foreign Bidders) to:
Plant & Machinery Inc.
1304 Langham Creek Drive, Suite 454, Houston, TX 77084
Wire transfer instructions can be found at pmi-auction.com

You must be registered and have your deposit in the hands of Plant & Machinery, Inc. at least 24 hours prior to the start of the auction. Failure to register and/or failure to send your deposit to Plant & Machinery, Inc. may disqualify you from bidding. **DON'T WAIT.**

If you need assistance, don't hesitate to call (713) 691-4401.
ALL WEBCAST BIDS ARE SUBJECT TO AN 18% BUYER'S PREMIUM.

TERMS & CONDITIONS OF ON-LINE AUCTION SALE

ALL BIDS ARE MADE AND RECEIVED UNDER THE TERMS HERINAFTER SET FORTH TO WHICH TERMS BIDDERS AGREE BY MAKING THEIR BID AT THE SALE. THESE TERMS CANNOT BE ALTERED EXCEPT BY THE AUCTIONEER. NO EMPLOYEE HAS AUTHORITY TO MODIFY SAME. THE OWNER AND/OR AUCTIONEER RESERVE THE RIGHT TO ADD TO OR MODIFY THE TERMS OF THE SALES.

An 18% Buyer's Premium will apply.

This auction may require a credit or debit card 100% refundable deposit. Your credit/debit card added through the Bidspotter.com fully secure and PCI compliant registration process will be assessed a 100% refundable \$3000 (US Bidder) or a \$10,000 (Foreign Bidder) deposit in order to be approved to bid online within this auction. If you are unsuccessful in the auction, your card will be refunded of your deposit within 24 hours post auction.

Plant & Machinery, Inc. **DOES NOT** take credit cards for auction invoice payments. All payments must be made by Cash, Cashier's Check, Wire Transfer or Company Check with Bank Letter of Guarantee to Plant & Machinery, Inc. (PMI). Here is an example of what your letter should be: [Mr. "Customer Name" representing "Company Name" is a customer of this bank. This bank will guarantee unqualified payment to Plant & Machinery, Inc. on the account listed herein up to the amount of \$_____. This letter is good until November 15, 2019.

By registering, the Bidder hereby expressly authorizes PMI to charge the Credit Card if the Bidder fails to pay any invoice within forty eight (48) hours after each invoice is issued to Bidder.

All bidders are required to give full name, company name, address, phone, fax, email address, and bank information when registering. All bidders must register before bidding.

All bids must be paid in full within two business days after the bids have closed. The Auctioneer shall determine the bidding increments. Some items may be auctioned with reserve.

All purchases must be removed within two weeks after the bids have closed or within the timeframe posted on the sale web page. No lot can, on any account, be removed prior to PMI having been paid in full. Removal shall be at the expense, risk and liability of the Purchaser. Purchases will be delivered only on presentation of paid bill. Auctioneer shall not be responsible for goods not removed within the aforesaid time.

Riggers, movers, electricians or buyer performing work at the Auction Sites must provide Auctioneer with evidence of insurance. The insurance coverage must be at a level acceptable to Auctioneer and to the Seller.

All checks for deposits and balances due shall be payable to the order of PLANT & MACHINERY, INC. unless instructed otherwise. All bills must be paid to the Houston headquarters offices of the Auctioneer at 1304 Langham Creek Drive, Suite 454, Houston, TX, 77084 or by wire transfer directly to the bank specified in the wire transfer instructions provided for this on-line auction. The full purchase price on all lots sold to the same buyer must be paid within the time fixed and before removal of any of the goods.

THE AUCTIONEER SHALL NOT BE RESPONSIBLE FOR THE CORRECT DESCRIPTION, GENUINENESS, AUTHENTICITY OF, OR DEFECT IN ANY LOT, AND MAKES NO WARRANTY IN CONNECTION THEREWITH. NO SALE SHALL BE SET ASIDE NOR ALLOWANCE MADE ON ACCOUNT OF ANY INCORRECTNESS, ERROR IN CATALOGING, OR ANY IMPERFECTION NOT NOTED. NO DEDUCTION ALLOWED ON DAMAGED ARTICLES. ALL ARTICLES BEING EXPOSED FOR PUBLIC EXHIBITION, AND SOLD "AS IS" AND WITHOUT RECOURSE. ARTICLES ARE NOT WARRANTED AS MERCHANTABILITY OR FIT FOR ANY PARTICULAR PURPOSE, AND NO CLAIM MAY BE MADE BY PURCHASER RELATING TO THE CONDITION OR USE OF ARTICLES PURCHASED, OR FOR PROXIMATE OR CONSEQUENTIAL DAMAGES ARISING THEREFROM.

Articles purchased may not incorporate approved activating mechanisms, operating safety devices or safety guards, as required by OSHA or otherwise. It is Purchaser's responsibility that articles purchased be so equipped and safeguarded to meet OSHA and any other requirements before placing such articles into operation.

Purchaser agrees to indemnify and hold Auctioneer harmless from and against all claims and liabilities relating to the condition or use of the articles purchased or failure of user to follow instructions, warnings or recommendations of the manufacturer, or to comply with federal, state and local laws applicable to such articles, including OSHA requirements, or for proximate or consequential damages, costs or legal expenses arising therefrom.

No claims will be allowed after removal of goods from premises.

Auctioneer shall not, in any event, be liable for non-delivery or any other matter or thing, to any Purchaser of any lot other than for the return to the Purchaser of the deposit or sum paid on said lot, should the Purchaser be entitled thereto.

In default of payment of bills in full within the time therein specified, the Auctioneer in addition to all other remedies allowed by law, may retain all monies received as deposit or otherwise, as liquidated damages. Lots not paid for and removed within the time allowed herein may be resold at public or private sale without further notice, and any deficiency, together with all expenses and charges of re-sale, will be charged to the defaulting Purchaser.

Persons attending during exhibition, sale or removal of goods assume all risks of damage of or loss to person and property and specifically release the Auctioneer from liability therefor. Neither the Auctioneer nor his principal shall be liable by reason of defect in or condition of the premises on which the sale is held.

The Auctioneer reserves the right to withdraw from sale any of the property listed or to sell at this sale property not listed, and also reserves the right to group one or more lots into one or more selling lots or to subdivide into two or more selling lots. Whenever the best interest of a Seller will be served, the Auctioneer reserves the right to sell all the property listed, in bulk.

Where items are sold by estimated weight, count or measure, the Purchaser will be billed for and required to pay for the estimated weight, count or measure. If, upon delivery, any shortage exists, the Purchaser will receive a refund at the rate of purchase. If there be an excess, the Purchaser will be required to pay for such excess, at the rate of purchase.

The Auctioneer reserves the right to reject any and all bids, alter the order of sale, and accept bids made on behalf of the Seller.

The record of sale kept by the Auctioneer will be taken as final in the event of any dispute. The Auctioneer is acting as agent only and is not responsible for the acts of its principals. Purchaser or its representative will independently inspect the goods bid upon by the Purchaser, and acknowledges to the Seller that Purchaser is acquiring all goods "AS IS, WITH ALL FAULTS" and "WITH REMOVAL AT PURCHASERS' RISK AND EXPENSE" and agrees to protect, indemnify and hold harmless the Seller from any and all claims, demands, causes of actions, liabilities and judgments relating to the conditions or use of the goods.

Seller, if not the same as the Auctioneer, shall have the rights, protections and benefits afforded to the Auctioneer as set forth herein.

Although all information has been obtained from sources deemed reliable, the auctioneer and seller make no warranty or guarantee, expressed or implied, as to the accuracy of the information herein contained, or contained in our catalog. It is for this reason that buyers should avail themselves of the opportunity to make inspection prior to the auction. Although it is not likely, auction sales are subject to cancellation or postponement. Kindly contact auctioneer prior to attendance.

ANY ADDITIONAL PROVISIONS OR AMENDMENTS TO THE ABOVE LISTED TERMS WILL BE POSTED TO THE ON-LINE SALE WEB PAGE BY THE AUCTIONEER PRIOR TO THE START OF BIDDING.