

ONLINE AUCTION

COMPLETE COKE MANUFACTURING FACILITY

By Order of U.S. Bankruptcy Court
Case No. 1-18-12156-MJK:

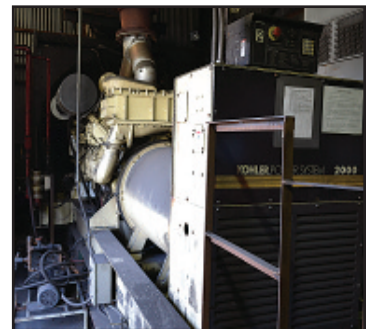


3875 River Road
Tonawanda, New York 14151

BID ONLINE: Thursday, July 11th thru Thursday, July 18th

INSPECTION: Wednesday, July 17 by Appointment Only - Call Gary at 224-927-5305
Must wear safety gear (hard hat, safety glasses & shoes) to inspect - NOT SUPPLIED

**Excavator • Crawler Tractors • Rubber Tire Loaders • Cranes • Loader Backhoe
Stand-by Generators • Material Handling Equipment • Trucks • Manlifts • Baghouse
Coke Equipment • Crushers • Screeners • Conveyors • Pumps • Transformers
Air Compressors • Locomotives & Railroad Equipment • Stores Department • Warehouse
Machine Shop Equipment • Scales • **HUGE SCRAP METAL OPPORTUNITY!!!****



www.pplauctions.com

105 Revere Drive, Suite C
Northbrook, Illinois 60062
Phone: 224.927.5320
sales@pplauction.com

BID ONLINE ONLY

BidSpotter.com

18% Online Buyer's Premium Applies

PPL IL License No. 444.000322

David Muslin License No. 441.001650

Joel Bersh License No. 441.000826

Michael L. Ackerman License No. 440.000539



EXCAVATOR • CRAWLER TRACTORS • RUBBER TIRE LOADERS

Caterpillar Hydraulic Excavator Model 320CL, S/N JANB03277, 45" Quick Change Bucket, 31" Wide Triple Bar Grousers (9104 hours indicated)

Caterpillar Crawler Tractor Model D8L, S/N 53Y03319, 180" Blade, 24" Grousers, Single-Tooth Ripper (needs repair)

Caterpillar Crawler Tractor Model D6MXL, S/N MT3W03222, 23.5" Track, 120" Angle Blade, 3-Tooth Ripper

Caterpillar Rubber Tire Loader Model 980G, S/N 2KR04092, 134" General Purpose Bucket, Air Conditioned Cab, Load Weight Readout (30,464 hours indicated)

Caterpillar Rubber Tire Loader Model 920, S/N 62K9292, 105" General Purpose Bucket

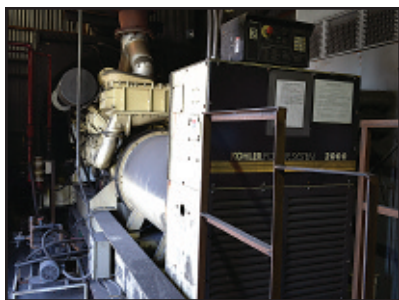
Michigan Rubber Tire Loader Model L-160, S/N L-160V60295#ASH, 130" General Purpose Bucket, Volvo BM Auto Powershift (needs injector pump)

CRANES • LOADER BACKHOE

P&H All-Wheel-Drive Rough Terrain Crane Model CML22, S/N 55490, 3-Piece Boom, Single Drum, Outriggers (6657 hours indicated)

Broderson 30,000 lb. LP/Gasoline Carry Deck Crane Model IC-200-2B, S/N 61003

John Deere 4x4 Loader Backhoe Model 310E, S/N T0310EX890469, Cab with A/C, Outriggers, 85" General Purpose Bucket, 24" Backhoe Bucket



STAND-BY GENERATORS

Koehler Power Systems 2000 kw Stand-by Generator Model 200R0ZD4, S/N 071940, 2000 kw @ 240 Volt, 600 Amps @ 240 Volt, Detroit Diesel 2935 HP V16 Engine, 72" Dia. (est.) Fan & Radiator, EnviroVault 6000 Gallon Diesel Tank, 18' x 35' x 20' (est.) Metal Building, Controls
Allis Chalmers 2500 kw AC Steam Turbine Stand-by Generator, S/N 152507, 2300 Volt, 785 Amp, 3-Phase, 3600 RPM
Cummins 450 kw Portable Diesel Stand-by Generator Model 680FDR5057FFW, S/N HH-90055-7/11-6, 480V, Cummins V12 Diesel, 2-Axle Trailer
Generac 276 kw Diesel Stand-by Generator Model 3286B-1268B, S/N AD2037715PD, 416 Amps

MATERIAL HANDLING EQUIPMENT • TRUCKS • MANLIFTS

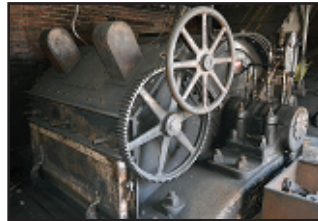
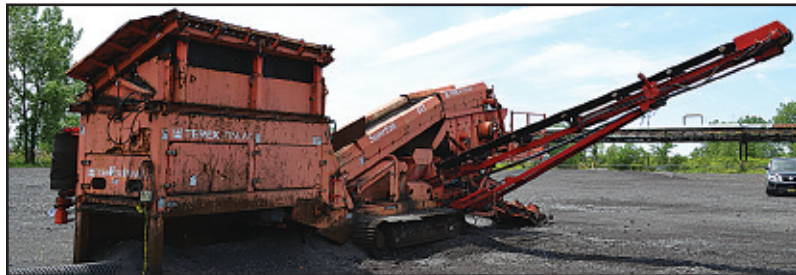
Caterpillar 8800 lb. All-Wheel-Drive Telehandler Forklift Model TH460B, S/N CSLF01059, Quick Detach Fork Rack, Side Shift, Auxiliary Hydraulics (6161 hours indicated)
Hyster 5000 lb. LP Forklift Model FS506, S/N D0GZD0713_Z, Solid Tires, Overhead Guard, 2-Stage Mast, Side Shift
Caterpillar 5000 lb. LP Forklift Model V50D, S/N 1205438, Pneumatic Tires, Overhead Guard, 3-Stage Mast, Side Shift
Sterling Single-Axle Vax Jet Vacuum Sewer Cleaning Truck
1995 Ford Aero Max L9000 Single-Axle Flat Bed Service Truck Tractor, VIN 1FTYS95SXSVA27479, GVW 33,200 lb., 10' Steel Deck Bed, Diesel Tank with Pump, Ridgid Gas Powered Compressor, Diesel, Manual Transmission (308,800 mi. indicated)
Skyjack 1500 lb. Electric 4x4 Manlift Model SJ700, S/N 33526, 66" x 116" Platform with Slide-out Extension, Joystick (2800 hours indicated)
Genie Diesel Telescoping Manlift Model S-85/2WD, S/N 356 (1996) (19,288 hours indicated)



BAGHOUSE

Environmental Elements 6-Section Pulse Jet Bag House Model 1440, Bottom Discharge with Rotary Valves, 350 HP, 84" Dia. (est.) Dust Fan with Stack, 18' x 25' Motor Control Building, Assorted Bag Frames & Dust Bags





COKE EQUIPMENT

Complete 300' (est.) Double-Side Coke Oven, with Removable Doors • DC Powered, Track Mounted Coke Oven Rammer/Unloader
(2) Coke Transfer Rail Cars • (2) Coke Car Electric Rail Switch Engines • Assorted Coke Oven Ceramics

CRUSHERS • SCREENERS • CONVEYORS

(2) Pennsylvania Crusher Co. Hammer Mill Pulverizers, Overhead Feed Hopper, Bottom Discharge, 350 HP 480 Volt AC Drive
8' Dia. x 12' Long Rotary Rod Mill with Inclined Feed Conveyor, Feed Screw, Gravity Discharge, 200 HP Drive (missing gear box)

Terex Finlay Supertrak Crawler 3-Deck Hydraulic Screener Model 663T, S/N FKT560778, with Feed Hopper, Inclined Feed Conveyor,
Triple Screener with (2) 25" & (1) 38" Discharge Conveyors, Powered by Remote Diesel Hydraulic Power Unit (offered separately)

Portable Hydraulic Power System with John Deere 4.5 L Diesel Engine Model 4045HF285C,
with Terex Reedrill Hydraulic Pump with Hydraulic Fluid Tank, Diesel Tank in Skid Base Mounted on 2-Axle Trailer

Extec Turbo Trac Diesel Crawler 3-Deck Screener, S/N 6728, (3) Power Belt Discharge Conveyors
(needs repair - 94 hours indicated on new diesel engine)

Overhead Single Screener with 32" x 75' Inclined Feed Conveyor, Bottom Discharge, 32" x 30' Discharge Conveyor,
Overhead Platform Mounted, with Feed Hopper, Inclined Discharge Conveyor

36" x 50' (est.) Inclined Power Conveyor/Screener, with Single-Stage Screen

5000' (est.) Power Belt Transfer Conveyor • Assorted Power Troughed Belt Transfer Conveyors

Custom Rail Mounted Rotating Stacker Conveyor, Belt Conveyor Boom, 50' Inclined Feed Conveyor, 1000' (est.) Electrified Track

32" x 45' Electric Hydraulic Portable Power Belt Conveyor, with 30' Extension

(2) 24" x 40' (est.) Bucket Elevators, with Hopper & Feed Conveyor





PUMPS • TRANSFORMERS • AIR COMPRESSORS

(2) Nidec Motor Corp. 200 HP Variable Speed Water Pumps, Flowserve Model 20EKH-1 Pump, 1780 RPM, 4500 GPM

Ingersoll Rand 16" x 20" Split Case Water Pump Model 14ALV, 3000 GPM, 100 HP Drive Motor, 2300 Volt

(3) Westinghouse Single-Phase Type 21 Transformers, Class OA/FA, 22,900 Volts, 2400/4160Y, S/Ns UAV4913-02, UAV4913-03, UAV4913-01

(3) Westinghouse Single-Phase Type RSL Sub-Stations, Class OA/FA, 22,900 Volts, 2400/4160Y, S/Ns UAV65000-0102, UAV65000-0105, UAV65000-0101

Ingersoll Rand 30 HP Rotary Air Compressor Model SSR-EP30SE, S/N JE4776U98077,

122 CFM, 125 PSI, with Ingersoll Rand Refrigerated Air Dryer Model D3000IN, 176 CFM

Assorted Rotary & Reciprocating Air Compressors

Place Bids Online at

BidSpotter.com

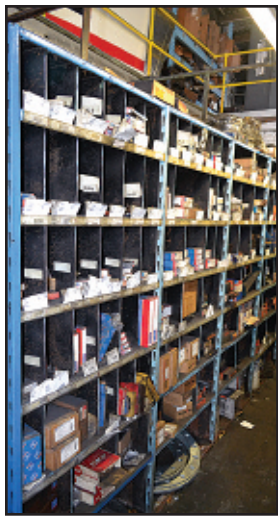
LOCOMOTIVES & RAILROAD EQUIPMENT

Electro-Motive Diesel Electric Locomotive Model 12-567-B, S/N 52-B-134, Engine Model SW9, S/N 6385-5, 1200 HP

GE Diesel Electric Locomotive Class B-B130/130-4GE747, S/N 30957, 470 HP (#7-51)

GE Diesel Electric Switch Engine, Cummins 6-Cylinder Diesel, Air Compressor • Electric Rail Car Spotter Engine

Rail Car Roll-Over Load Dump, AC Gear Box Drive • Large Assortment of New & Used Wood Railroad Ties • (20) Assorted Gondola Rail Cars



STORES DEPARTMENT • WAREHOUSE CONTENTS

Stores Department including:

Plumbing & Fastener Inventory, Black Pipe, Electrical Supplies, Welding Supplies, Valves, Stainless Steel Tube Fittings, Pump Parts, Machinery Parts, Roller Chain, Large Assortment Bearings, Hubs, Sprockets, Stainless Steel Tube, Spare Machine & Maintenance Parts, Large Diameter Bolts, etc.

Warehouse Contents including:

AC Motors - New & Used, DC Motors - Used & Rebuilt, Pumps - Centrifugal & Split Case, Gear Boxes, Control Panels - New & Used, Large Assortment of Stainless Steel Safety Switches, Electrical Hardware, Air Compressors, Conveyor Parts, Assorted Plant & Machinery Parts, etc.

MACHINE SHOP EQUIPMENT

American 30" x 120" Geared Head Engine Lathe, S/N 42354 • Monarch 20" x 72" Geared Head Engine Lathe, S/N 38282

American 19" x 84" Geared Head Engine Lathe, S/N 71465-49

Cincinnati Vertical Mill Model Cinova 80/205-12, S/N 31422V5Y-3, 12" x 58" Work Table

Cincinnati No. 2 Horizontal Mill, 12" x 51" Work Table

American 4' x 11" Column Radial Drill, S/N 64300-42, L-Shape Base, Universal & Plain Box Tables

Elmes Portable Manual Hydraulic Wheel Press Model N8021, S/N 12100, 7.5" Ram Diameter, 108" Max. Opening

18" Mitering Vertical Band Saw, 28" x 32" Work Table • Western 24" Drill Press, 24" x 24" Adjustable Table • Steptoe 30" Universal Shaper

Safety Kleen Stainless Steel 24" x 48" Degreaser with Elevating Basket • (5) Miller Bobcat 250 Gas Portable Welders

Greenlee Tugger Electric Cable Puller Model 642 • Greenlee Rotary Conduit Bender • Coffing 2 Ton Electric Cable Hoist

Gates 700 Series Hydraulic Hose Fitting Crimper Model PC707 • 12" Swivel Base Machine Vise

Factory Equipment including:

Hydraulic Jacks, Pneumatic Jacks, Hammer Drills, Porta Power Equipment, Trash Pumps, Lifting Chains, Hand Tools, Clamps, Come-Alongs, Chain Falls, Slings

BidSpotter.com



SCALES • MISCELLANEOUS EQUIPMENT

Avery Weigh-Tronix 150,000 lb., 80' Above-Ground Digital Truck Scale, with Programmable DRO

200 Ton Beam Scale Converted to Digital Readout Rail Car Scale

Terex Diesel Portable Trailer Light Tower

Karcher Professional Portable Hot Water Power Washer

(3) Assorted Yamaha Electric Golf Carts

(6) Assorted Ridgid & Toledo Power Chucks

(2) 42' Shipping Containers • 1000 Gallon Propane Tank



*Have Assets for Sale?
Need a Certified Appraisal?
Looking for a Creative Solution?*

We can assist with:

Auctions

Cash Purchases

Financing

Liquidations

Contact

Joel Bersh at 224-927-5302

or joel@pplauction.com



★★★ HUGE SCRAP OPPORTUNITY ON 160 ACRE SITE ★★★



Assorted Railroad Rail (estimated at 5 miles on 160 acre plant site) • **Out-of-Service Disassembled Construction Equipment**

100 Year Accumulation Assorted Scrap throughout 160 Acre Plant Site including:

Vehicles, Heavy 175 lb. Rail, Machine Parts, Fire Engines, In-Service Equipment No Longer Viable for Removal & Reinstallation, Out-of-Service Equipment, Long Runs of Transport Conveyor & Support Structure, Large Assortment of Installed Electrical Panels



105 Revere Drive, Suite C
Northbrook, Illinois 60062

www.pplauctions.com

COKE MANUFACTURING FACILITY



ONLINE AUCTION



3875 River Road
Tonawanda, New York 14151

BID ONLINE: Thursday, July 11 thru Thursday, July 18

INSPECTION: July 17 by Appointment Only - Call 224-927-5305



INDUSTRIAL
AUCTIONEERS
ASSOCIATION



Machinery Dealers
National Association

**ATTENTION: PLANT MANAGER
OR MACHINERY BUYER**

ONLINE AUCTION



BID ONLINE: Thurs. July 11th thru Thurs. July 18th

INSPECTION: July 17 by Appointment - Call 224-927-5305

Auction Terms & Conditions

REGISTRATION & BIDDING: Everything will be sold to the highest bidders for cash, in accordance with the auctioneer's normal "Terms of Sale", which are available at the site or by request at 224-927-5320. **All bids are in US dollars. An 18% Buyer's Premium will be added to online bids.**

Your bid is a contract: Place a bid only if you're serious about buying the item. If you are the high bidder, you will enter into a legally binding contract with PPL Auction.

PAYMENT: All successful Bidders agree to make full payment to PPL Auction at the conclusion of the sale. Only Bank Wire Transfer, Bank Check or Cashier's Check payable to PPL Auction will be accepted. Firm and personal checks accepted only if accompanied by a letter from your bank guaranteeing your funds. If you are using a wire transfer your bank may wire the funds the day after the sale. All sales are subject to sales and/or local taxes unless a signed exemption form is presented at the time of the purchase. Payment will be made in US dollars only.

VERIFY DESCRIPTIONS: Note: Although all information has been obtained from sources deemed reliable, the auctioneer and seller make no warranty or guarantee, expressed or implied, as to the accuracy of the information contained in the auction brochure, lot catalog or sale web pages.

Buyer agrees to accept assets purchased per standard auction terms, "AS IS, WHERE IS, WITH ALL FAULTS" WITHOUT ANY REPRESENTATION OR WARRANTY BY PPL AUCTION OR ANY OTHER PERSON. THERE ARE NO EXPRESSED OR IMPLIED REPRESENTATIONS OR WARRANTIES WITH RESPECT TO THE ASSETS INCLUDING, WITHOUT LIMITATION, ANY REPRESENTATION OR WARRANTY REGARDING THE MERCHANTABILITY OR FITNESS FOR ANY PARTICULAR PURPOSE.

REMOVAL & RIGGING: Removal and Rigging is the responsibility of the buyer. Anyone, either a buyer or a rigger, who uses a powered vehicle to remove anything from the auction site, will be required to present a certificate of insurance. Removal may begin when the auction has completed and payment in full has been made.

ISSUANCE OF TITLE: Titles relative to titled assets purchased will be mailed to the purchaser's address on file after payment is received and cleared.

All invoices must be paid in full at end of auction. Any merchandise not paid for at this time will be considered abandoned and may be resold by auctioneer, any loss incurred in the resale to be borne by the original buyer.

ONLINE BIDDING ONLY

Place Your Bids at

BidSpotter.com

ONLINE BIDS SUBJECT TO 18% BUYER'S PREMIUM

**Scan
with
your
phone
to link
to our
website**



105 Revere Drive, Suite C • Northbrook, Illinois 60062
Ph: 224.927.5320 • Fax: 224.927.5311 • sales@pplauction.com

www.pplauctions.com