

ONLINE ONLY WEBCAST AUCTION

No On-Site Bidding – Listen to Auction in Real Time While on Your Computer

FIBERGLASS WINDOW & PATIO DOOR MANUFACTURING PLANT

Plant
Closed:

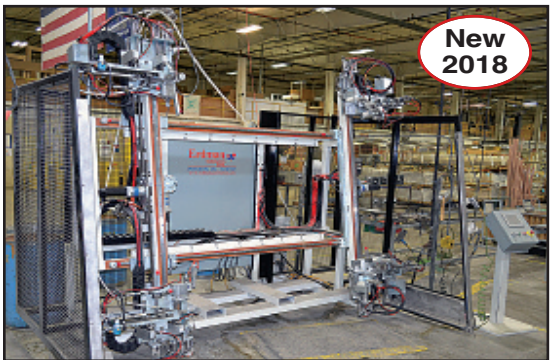
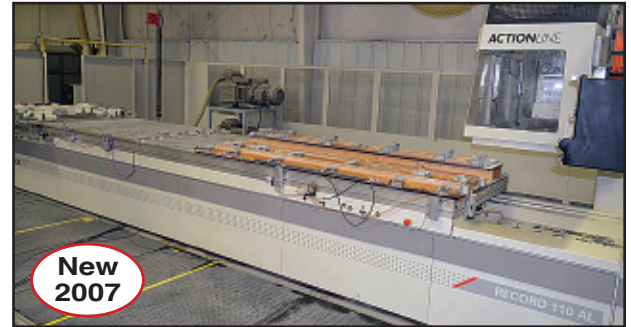
BEECHWORTH  WINDOWS

1100 Barnett Road
Ladysmith, Wisconsin 54848

SALE DATE: Wednesday, June 19th 10:00 am CDT

INSPECTION: Tuesday, June 18th 9:00 am - 4:00 pm CDT

CNC Routers/Machining Centers • Frame & Sash Clamps • Sealant Tables • Glazing Station
Glue & Sealant Pumps • Window Manufacturing Equipment • Saws • Shapers & Routers
Laminating Equipment • Vinyl Window Equipment • Dust Collectors • Stretch Wrappers
Air Compressors • Material Handling Equip. • Window Display Trailers • Inventory • Real Estate



BID ONLINE ONLY   
18% Online Buyer's Fee Applies


www.pplauctions.com

105 Revere Drive, Suite C
Northbrook, Illinois 60062
Phone: 224.927.5320
sales@pplauction.com


auctioneers | appraisers | since 1961
www.cia-auction.com

2020 Dunlap Street
Cincinnati, Ohio 45214
Phone: 513.241.9701
info@cia-auction.com



CNC ROUTERS/MACHINING CENTERS

SCM Group Routech Traveling Column Action Line Record 110AL CNC Vertical Router/Machining Center Model RD110ALXL, S/N AA2/000132 (2007), 12 Position ATC, Vertical Multi-Spindle Boring Head, 48.75" x 238" Vacuum Work Table, 48.75" x 116" Aluminum Sub-Table, 35-3/4" x 92" Sub-Table with Pneumatic Clamps, Assorted Work Fixtures, (2) Vacuum Pumps, CNC Control, Operator Control Pedestal (#B009)

Weeke CNC Router Model BP12/W/Optimat, S/N 0-250-05-1962 (1996), 36" x 110", Mini Recording System, CNC Control

FRAME & SASH CLAMPS

Erdman Automation Corp. 72" x 78" Programmable Pneumatic Fiberglass Tilt Frame Clamp Model Frame Clamp, S/N 171686-2-18 (2018), Pneumatic Clamping, with Top & Bottom Left Screw Driving Heads, Top & Bottom Right Pneumatic Staple Heads, Vibratory Feed Bowl, Allen Bradley Touchpad Control, Light Curtain (#B300)

72" x 100" Programmable Pneumatic Fiberglass Tilt Frame Clamp, with Top & Bottom Left Boring & Screw Driving Heads, Top & Bottom Right Pneumatic Staple Heads, Vibratory Feed Bowl, Touchpad (#B022)

Erdman Automation 90" x 86" Programmable Pneumatic Sash Clamp Model Sash Clamp, S/N 171555-2-18 (2018), Allen Bradley Panelview Plus PLC

80" x 100" Inclined Pneumatic Sash Clamp, with Clamp Monitor (#B023) • **80" High x 74" Wide Pneumatic Frame Clamp**

72" x 84" Pneumatic Sash Clamp, with Joystick Controls (#B201)

(3) Carlson Systems 68" x 96" Inclined Pneumatic Sash Clamps, with Clamp Monitor (#B021, #3315 & #B019, #B018)

(2) 62" x 80" Pneumatic Tilt Sash Clamps, w/Monitor (#B024, #B025) • **48" x 100" Inclined Pneumatic Sash Clamp**, w/Clamp Monitor (#B020)



New
2018



New
2006

SALE DATE: June 19th at 10:00 am CDT



New
2004



SEALANT TABLES

Erdman Automation 96" x 108" Programmable Sealant Application Table Model Glazer, S/N 171556-2-18 (2018), Pneumatic Feed Rollers, Graco Therm-O-Flow Bulk Hot Melt System Sealant Pump, Allen Bradley Panelview Plus PLC (#B302, #B304)

Erdman 80" x 120" Programmable Vertical Hot Melt Sealant Application Table Model 72964HA, S/N 6889-12/06 (2006), with Nordson BM Series Digital Adhesive Supply System, Allen Bradley Panelview 300 PLC (#B145)

Erdman Programmable Vertical Hot Melt Sealant Table Model VH4296FB, S/N 3445-1-4/04, Touchpad Programmable Applicator Head, Nordson BM Series Digital Adhesive Supply System

GLAZING STATION

Erdman Automation 55" x 100" Vertical Programmable Glazing Station Model H4878V6FB, S/N 4363-1-11/04 (2004), with Graco Senator Pump, Graco Therm-O-Flow 200 Bulk Hot Melt System, PLC Controls (#B053, #B034, #B191)

GLUE & SEALANT PUMPS

Graco Therm-O-Flow 20 Portable Digital Hot Melt Glue System, with Hose & Gun, Easy Key PLC

Graco HFR Metering System Digital Thermo Foam Machine, with Hose & Head (#B210)

(7) Bench Mark Technologies Portable Hot Melt Glue Systems, with Hose & Gun • **Graco Pneumatic Sealant Pump** (#B037)





WINDOW MANUFACTURING EQUIPMENT

Custom 92" x 112" Vertical Window Seal Test Cabinet • Assorted Roller Bed Portable Large Frame Product Transport Carts
 120" Roller Bed Pneumatic Vertical Window Lowerator • 16' Vertical Roller Bed Window Inspection/Labeling Table, 12' x 10" Roller Feed Table
 48" x 60' Slide-Along Window Packing Table • Custom Portable 4-Head Jamb Stapler (under 60' packing table)
 (4) 72" Vertical Window Electric Lowerator Inspection/Labeling Tables • 72" Electric Window Lowerator Inspection Table (#B125)
 84" x 120" Pneumatic Tilt Table • (3) Custom Programmable Sash Rail Mills, with Shop Vac Dust Collector, PLC Control (#B305, #B306, #B307)
 Double Tilt Frame Pneumatic Pre-Assembly Clamp (#102) • Pneumatic Sill Pre-Clamp Frame • Electric Dual SDL Taping Table
 Double Blade Sill Track Weep Machine, Pneumatic Clamping, Double Finger Safety (#VS1868)
 Programmable SDL Saw, with Feed Table, Compumotor PLC (#B069) • Stegherr SDL Saw, with Feed Table, Compumotor PLC (#R101 & #B038)
 Wegoma SDL End Mill, with Pneumatic Clamping (#B075) • 48" x 14' Vertical Inspection Table • 48" x 144" Horizontal Slide Table
 (5) 48" x 96" Horizontal Inspection Tables, Some with Air Lifts • 48" x 16' Pneumatic Tilt Turn-Over Table with Manual Liftable Side Extensions
 48" x 144" Pneumatic Tilt Table (#B198) • Custom Tilt Latch Router (#B118) • W&H 5.5 Top Planer (#B107)
 Wegoma Tilt Picture Bead End Mill, with Pneumatic Clamping (#SV308) • Kreg Bench Top Manual Pneumatic Pocket Borer (#B110)
 90" x 96" Pneumatic Tilt Table • 84" x 120" Adjustable Height Pneumatic 2-Way Tilt Table (#B218) • 84" x 120" Pneumatic Tilt Table (#MEZZ)

SAWS

Joseph Machine Co. Programmable Multiple-Strip Cut-off Saw Model ZHVUN-4545, S/N 3150172-0817 (2017),
 25' Programmable Multi-Strip Feed Table with Clamps, Pneumatics, PLC (#B194)
 Joseph Machine Co. Programmable Multiple-Strip Cut-off Saw Model ZHVUN-4545/C1F-24, S/N 3150-11-0603,
 25' (est.) Programmable Multi-Strip Feed Table with Clamps, Pneumatics, Joseph Control, Power Belt Outfeed (#B004, #SV45)
 Joseph Machine Co. Programmable Multiple-Strip Cut-off Saw Model SHVN-4545, with Dual 23C-1-F, S/Ns 04045-00, 155-3-895,
 25' (est.) Programmable Multi-Strip Feed Table with Clamps, Pneumatics, Joseph Control, Roller Conveyor Outfeed (#B003)
 Fiberglass Strip Cut-off Saw with Programmable Multi-Strip Feeder, 24' (est.), Pneumatics, PLC (#B149)
 Fiberglass Strip Cut-off Saw with Programmable Multi-Strip Feeder, 36' (est.), Pneumatics, PLC (#B005)
 (3) OMGA Pneumatic Feed Radial Arm Saws Model RN450US, S/Ns 01285637 (#B101), 01285101 (#B098), 01284795 (#B100)
 Maggi Engineering Radial Arm Saw Model Junior 640, Pneumatic Feed, Tiger Multiple-Strip Programmable Stock Stop, Custom Guard
 CTD 12' Double End Trim & Miter Saw Model DM200, S/N 1323, Pneumatic Clamping, Operator Pedestal
 Wegoma 236" Double End Cut-off Saw Model SD300, S/N 500100201, with Pneumatics (#B002)
 (8) Dewalt Compound Miter Saws, Some with Tiger Programmable Stock Stops & Table • Ryobi 10" Portable Folding Leg Table Saw
 Fiberglass Tilt Slide Jamb Cover Saw, with Double Diamond Blade (#B166) • Fiberglass Dual Station Jamb Trim Saw (#B001)
 Wilton Portable Horizontal Band Saw Model 103400, S/N 10613 • Maggi 4-Roll Power Stock Feeder, with Support Arm (#B105)

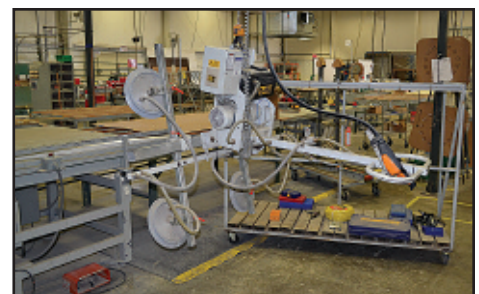
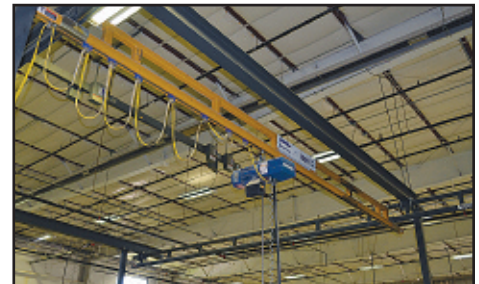


SHAPERS & ROUTERS • LAMINATING EQUIPMENT

(2) Invicta Variable Speed Sliding Table Single-Spindle Shapers Model TI-14, S/Ns 2436 (#B121), 1792 (#B120), Pneumatic Clamping
 SCMI Single-Spindle Shaper/Router Model T110A, S/N AB43058, with Sliding Pneumatic Clamping Fixture (#B133)
 Northtech Single-Spindle Shaper Model NT-735S-10, S/N 990548, with Multiple SDL Bar Pneumatic Clamping Fixture
 Delta Single-Spindle Shaper (#B141) • Ryobi Single-Spindle Shaper (#B085)
 Powermatic Single-Spindle Shaper, with Custom Pneumatics (#B197)
 Elumatec Fiberglass Shaper, with Tiger Stop Programmable Gauge & Monitor (#B007)
 (7) Bosch Single-Spindle Bench Top Shapers (#B195, #B161, #B051, #B186, #B185, #B086, #N/A)
 Wegoma Single-Spindle Router Type KE226, S/N 32753, with Stock Stops
 Custom 4-Station Frame Router, with Pneumatics (#1909, #1922) • Custom Router with Pneumatic Clamping (#B160)
 36" x 96" Hot Platen Pneumatic Press, with (2) Mini-Therm Temperature Controls & Feed Conveyor (#B211)
 76" Power Laminating Roll, w/Conveyor (#B209) • Bilco 60" Laminating Roll, w/Roller Infeed & Outfeed Tables (#B303)
 RLS 48" Laminating Roll Model SF-02, S/N 1901-311, with Roller Infeed & Outfeed Conveyors

VINYL WINDOW EQUIPMENT • DUST COLLECTORS

Pro-Line 120" Vinyl Corner Welder Model TH21, S/N 86355 (#B222)
 Wegoma 96" Vinyl Corner Welder Type 520L, S/N 520694 (2006)
 Wegoma Vinyl Corner Cleaner Model SD32, S/N S314068, with Pneumatics
 Central Dust Collector, Pulse Jet, Replaceable Bags, 100 HP IAP Fan, Koger/Air Rotary Value, 7.5 HP Vacuum Pump, Podrigue Metal Vent, Dust Tube
 (2) Powermatic Portable 2-Bag Dust Collectors • (7) Jet, Powermatic & Central Machinery Portable Single-Bag Dust Collectors



STRETCH WRAPPERS • AIR COMPRESSORS

Kalamazoo Packaging Systems 939-Jumbo Rotary Tall Product Stretch Wrapper Model 939-M11J, S/N 070305, 72" Dia. Table, 8" Roller Conveyor Product Support with Overhead Hold Down, 78" Throat, Foot Treadle

(2) Orion Rotary Tall Product Stretch Wrappers Model L66-12TP, S/Ns 7067330, 8028030, 60" Dia. Table, 10" Roller Conveyor Product Support with Overhead Hold Down, 78" Throat, Foot Treadle (#B041)

Atlas Copco 75 HP Rotary Air Compressor Model GA55VSD, S/N AP1575669 (2008), 185 PSI (36,341 hours indicated)

Ingersoll Rand 75 HP Skid Mounted Rotary Air Compressor (10,246 hours indicated)

Ingersoll Rand 3 HP 2-Stage Vertical Tank Mounted Air Compressor • Aircel Refrigerated Air Dryer Model AR500, S/N B1MJBK935 (#B013)



MATERIAL HANDLING EQUIPMENT • WINDOW DISPLAY TRAILERS

Komatsu 4000 lb. LP Forklift Model FC25T-14, S/N 581859A, Solid Tires, Overhead Guard, Cab, 188" Lift of 3-Stage Mast

Komatsu 3500 lb. Electric 3-Wheel Forklift Model FB20M-3, S/N 24720A, Solid Tires, Overhead Guard, 188" Lift of 3-Stage Mast, Side Shift

(2) Linde 6000 lb. Electric Walk-Behind/Rider 6' Pallet Trucks Model EWR60-02, S/Ns 2692-2000 (#G0489), 2692-2724 (#G07613)

Caterpillar 4000 lb. Electric Walk-Behind Pallet Truck Model NPP40, S/N 2CL03636, with On-Board Charger (#1756)

Rol-Lift 2000 lb. Electric Walk-Behind Stacker Lift Model PSF20T96FD42I27AF0, S/N 123579 (#E23)

Harmont 30" x 60" Cardboard Baler Model M60STD, S/N 60770, Top Hydraulics

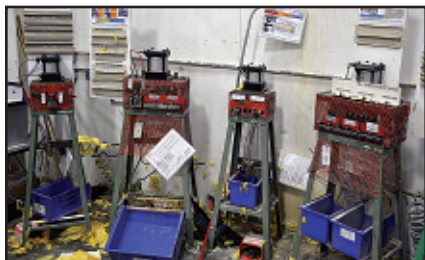
Spanco 1000 lb. x 20' Span Self Supporting Bridge Crane, with 50' Runway, Demag Electric Chain Hoist

Schmalz Vacuumaster 250 kg Vacuum Window Lifter (#1498) • Ferro Charge IFR Series Forklift Battery Charger (#902)

(10) Assorted Standard & Scissor Lift Hydraulic Pallet Jacks • (10) Assorted Portable/Forkliftable Self Dumping Hoppers

(3) Tandem-Axle Window & Door Display Trailers, (1) 35', (1) 30', (1) 25',

with Heat, A/C, Onan Propane Generator, (2) Roll-up Display Doors, Man Door, Ball Hitch



**\$200,000 (est.)
New Window Hardware**

***6%
Buyers
Fee***

REAL ESTATE OFFERED AT AUCTION

82,500 sq. ft. Manufacturing Building on 14.45 Acres



- Located in the Ladysmith, WI Industrial Park • Original Construction 1992, with 1997 Addition
 - Includes 69,783 sq. ft. Fully Sprinklered Manufacturing Space w/(5) Docks, (4) Drive-out Doors
 - 8000 sq. ft. Mezzanine, 4700 sq. ft. Office • Ample Parking & Extensive Fenced Yard
- Call Al Taft, AFT Real Estate, Inc. at 715-839-1234** (subject to 24 hour owner's approval)

MISCELLANEOUS EQUIPMENT • INVENTORY

Rousselle 40 Ton OBI Press No. 4, S/N P30818, 3" Stroke, 3.5" Adj., 12" Shut Height, 165 SPM, Air Clutch

(15) Alva Alan 5 Ton OBI Presses • Manhattan 2 HP Vertical Mill, S/N 501248, 9" x 48" Power Feed Work Table

Powermatic 20" Variable Speed Drill Press, S/N 220V207, Crank Adjustable T-Slot Oil Groove Table (#1769)

Delta 16" Drill Press with 2-Spindle Head • Orbit 15" Drill Press with 2-Spindle Head

Global Finishing Systems 8' Wide x 6' Deep x 92" High Fan-in-Stack Spray Booth, Filter Wall, Explosion Proof Light

Technical Services Inc. Razorgage 120" Digital Gauging Table, with Digital Readout (#B152)

(15) Pneumatic Trim Presses • Kalamazoo 10" Disc Sander • Deltronic 14" Optical Comparator Model PH214-RR, S/N 219032453, with Base

Lincoln 250 Amp Portable MIG Welder Model PowerMig 255 • Advance Stand-up Rider Electric Floor Scrubber Model SC1500REV

Manitowac Ice Machine • Criterion Chest Freezer • Aurora Double-Door Glass Front Display Refrigerator (like new)

(10) Assorted Safety Stairways, Up to 10' • Epson Ceiling Mount Powerlight 1945W Projector • (14) Assorted Zebra Printers

Factory Equipment & Office Furniture including:

Power Hand Tools, Inspection Equipment, Clamps, Benches, Vises, Shop Stools, Trash Containers, Conveyor, Cafeteria Furniture, Ladders, Paint Spray Equipment, Flammable Cabinets, Floor Mats, (50) Lots of Executive Office Furniture

★★ \$200,000 (est.) New Window Hardware & Assorted Lumber ★★

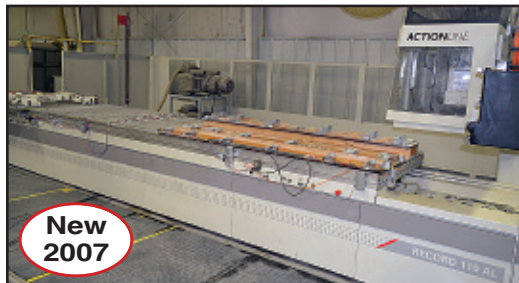




105 Revere Drive, Suite C
Northbrook, Illinois 60062

www.pplauctions.com

FIBERGLASS WINDOW MFG. PLANT



New
2007



New
2018

ONLINE ONLY WEBCAST AUCTION

BEECHWORTH  WINDOWS

1100 Barnett Road
Ladysmith, WI 54848

SALE DATE: Wednesday, June 19th 10:00am CDT

INSPECTION: Tuesday, June 18th 9:00am - 4:00pm CDT



INDUSTRIAL
AUCTIONEERS
ASSOCIATION



Machinery Dealers
National Association

**ATTENTION: PLANT MANAGER
OR MACHINERY BUYER**

ONLINE ONLY WEBCAST AUCTION

 BEECHWORTH WINDOWS

SALE DATE: Wednesday, June 19th 10:00am CDT

INSPECTION: Tuesday, June 18 9:00am - 4:00pm CDT

Auction Terms & Conditions

REGISTRATION & BIDDING: Everything will be sold to the highest bidders for cash, in accordance with the auctioneer's normal "Terms of Sale", which are available at the site or by request at 224-927-5320. All bids are in US dollars. An 18% Buyer's Fee will be added to online bids.

Your bid is a contract: Place a bid only if you're serious about buying the item. If you are the high bidder, you will enter into a legally binding contract with PPL Auction.

PAYMENT: All successful Bidders agree to make full payment to PPL Auction at the conclusion of the sale. Only Bank Wire Transfer, Bank Check or Cashier's Check payable to PPL Auction will be accepted. Firm and personal checks accepted only if accompanied by a letter from your bank guaranteeing your funds. If you are using a wire transfer your bank may wire the funds the day after the sale. All sales are subject to sales and/or local taxes unless a signed exemption form is presented at the time of the purchase. Payment will be made in US dollars only.

VERIFY DESCRIPTIONS: Note: Although all information has been obtained from sources deemed reliable, the auctioneer and seller make no warranty or guarantee, expressed or implied, as to the accuracy of the information contained in the auction brochure, lot catalog or sale web pages.

Buyer agrees to accept assets purchased per standard auction terms, "AS IS, WHERE IS, WITH ALL FAULTS" WITHOUT ANY REPRESENTATION OR WARRANTY BY PPL AUCTION OR ANY OTHER PERSON. THERE ARE NO EXPRESSED OR IMPLIED REPRESENTATIONS OR WARRANTIES WITH RESPECT TO THE ASSETS INCLUDING, WITHOUT LIMITATION, ANY REPRESENTATION OR WARRANTY REGARDING THE MERCHANTABILITY OR FITNESS FOR ANY PARTICULAR PURPOSE.

REMOVAL & RIGGING: Removal and Rigging is the responsibility of the buyer. Anyone, either a buyer or a rigger, who uses a powered vehicle to remove anything from the auction site, will be required to present a certificate of insurance. Removal may begin when the auction has completed and payment in full has been made.

ISSUANCE OF TITLE: Titles relative to titled assets purchased will be mailed to the purchaser's address on file after payment is received and cleared.

All invoices must be paid in full at end of auction. Any merchandise not paid for at this time will be considered abandoned and may be resold by auctioneer, any loss incurred in the resale to be borne by the original buyer.

ONLINE BIDDING ONLY



ON-LINE BIDS SUBJECT TO 18% BUYER'S FEE

Scan
with
your
phone
to link
to our
website



105 Revere Drive, Suite C
Northbrook, Illinois 60062

Phone: 224.927.5320
sales@pplauction.com

www.pplauctions.com



CINCINNATI
INDUSTRIAL
AUCTIONEERS
auctioneers | appraisers | since 1961

www.cia-auction.com

2020 Dunlap Street
Cincinnati, Ohio 45214

Phone: 513.241.9701
info@cia-auction.com