

# PUBLIC AUCTION

## OILFIELD SERVICE & CONSTRUCTION COMPANY

By Order of  
U.S. Bankruptcy Court  
Case No. 18-34567-H1-11:



12627 E. Highway 21  
Midway, Texas 75852  
(between Dallas & Houston)

**THEATER STYLE AUCTION: Tuesday, April 16th 10:00 am CDT**

to be held at: Truman Kimbro Convention Center, 111 W. Trinity Street, Madisonville, TX 77864

INSPECTION: April 15 from 8:00 am to 4:00 pm & Morning of Sale - at 12627 E. Hwy. 21, Midway, TX 75852

(10) Excavators • (12) Crawler Tractors • (5) Rollers • (14) Tractors & Backhoes  
(4) Skid Steer Loaders • (5) Motor Scrapers & Graders • (2) Forklifts • (5) Dump Trucks  
(4) Truck Tractors • (100) Pick-up & Mechanics Trucks • (8) Belly Dumps • (60) Trailers  
(9) Generators • (5) Air Compressors • (6) ATVs • Miscellaneous Equipment



Bid Live or Online at [proxibid](http://proxibid.com) [BidSpotter.com](http://BidSpotter.com) [INDUSTRIAL BID](http://INDUSTRIAL BID)



105 Revere Drive, Suite C  
Northbrook, Illinois 60062  
Phone: 224.927.5320  
sales@pplauction.com

[www.pplauctions.com](http://www.pplauctions.com)



9786 Timber Circle, Suite A Spanish Fort, Alabama 36527  
504.579.4827 • info@m-epartners.com

[www.m-epartners.com](http://www.m-epartners.com)

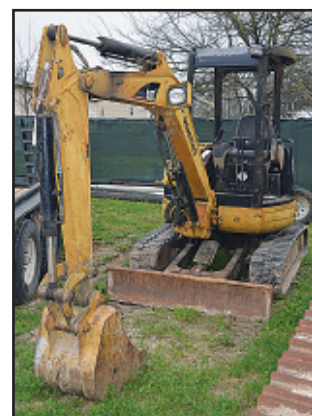
Texas Auctioneer License Numbers: Joel Bersh 16980, Michael Ackerman 7516

Buyer's Premium 15% Onsite, 18% Online





proxibid BidSpotter.com INDUSTRIAL BID



## (10) EXCAVATORS

(2) 2012 Caterpillar 329E • 2006 Caterpillar 325D • 2006 Caterpillar 320C • Caterpillar 303 Mini • Caterpillar 329  
2013 John Deere 210G-LC • 2011 John Deere 250G • 2011 John Deere 200D • 2012 John Deere 245G





**Don't Miss This Sale  
April 16th 10:00am**



### **(12) CRAWLER TRACTORS**

2013 Caterpillar D6TXW • 2014 Caterpillar D6NXI • 2011 Caterpillar D6T • 2008 Komatsu DSWX-17 • (2) 2007 & 2005 Caterpillar D5G  
(2) Caterpillar D4/Side Broom • 2008 Case 1650L • 2012 John Deere 850K LGP • 2013 John Deere 650K LGP • 2012 John Deere 750K LGP

### **(5) ROLLERS**

(2) 2014 Dynapac CA2500D • Dynapac CA2500PD • (2) 2014 Dynapac CA250D

### **(14) TRACTORS & BACKHOES**

Kubota • New Holland • 2007 Terex 420 (4x4) • 2005 Caterpillar 420D • (2) 2008 Case 580M • (4) 2013 & 2010 John Deere 310J  
John Deere 744K • John Deere 5075e • 2008 Caterpillar 420E (4x4) • 2012 Case 580 • Assorted Buckets





#### (4) SKID STEER LOADERS

2014 Caterpillar 259D • 2013 Caterpillar 226B3 • 2006 Caterpillar 236B • Bobcat 763G  
Caterpillar A198 Auger Drive • 2014 Caterpillar Trenching Attachment

#### (5) MOTOR SCRAPERS & GRADERS

(2) 2006 & 2005 Caterpillar 613C Motor Scrapers • 2007 Caterpillar 140H • Caterpillar 12H • 2012 John Deere 672G

#### (2) TELEHANDLER FORKLIFTS

JCB 509-42 Telehandler • Caterpillar TH63 Telehandler

#### (5) DUMP TRUCKS

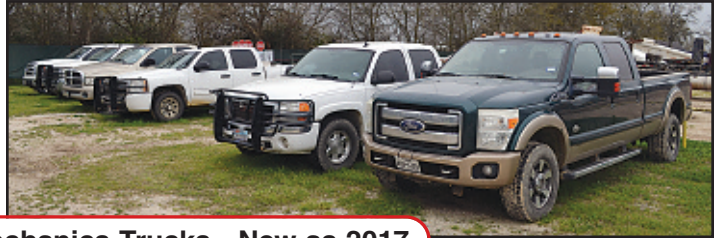
(2) 2016 Mack Tandem-Axle • 2013 John Deere 250D Articulated • 2005 Western Star Tandem-Axle • 1998 Mack Tandem-Axle

#### (4) TRUCK TRACTORS

2013 Mack Tandem-Axle • 2012 Peterbilt Tandem-Axle • 1998 Peterbilt • 2010 Mack Winch







**Late Model Pick-ups & Mechanics Trucks - New as 2017**



## **(100) PICK-UP & MECHANICS TRUCKS**

2012 Ford F-450 Pick-up • (7) 2015, (7) 2014, (1) 2012, (1) 2011 & (1) 2008 Ford F-350 4x4 Pick-ups

(1) 2017, (2) 2015, (1) 2014, (1) 2013 & (1) 2008 Ford F-250 4x4 Pick-ups

(1) 2017, (1) 2015, (5) 2014, (2) 2013, (2) 2012, (1) 2010 & (1) 2007 Ford F-150 4x4 Pick-ups

(2) 2015 Ford Extended Cab Pick-ups • 2013 Ford Explorer • (3) 2011 Ford F-550 Mechanics • (1) 2011 & (1) 2008 Ford F-450 Mechanics

(1) 2013, (2) 2012, (4) 2011, (1) 2010, (1) 2009 & (2) 2008 Chevrolet 3500 4x4 Pick-ups

(4) 2015, (1) 2014, (1) 2013, (2) 2012 & (1) 2010 Chevrolet 2500 4x4 Pick-ups • (3) 2013, (1) 2012, (1) 2011 & (2) 2010 Chevrolet 1500 4x4 Pick-ups

2015 Chevrolet Suburban • 2011 Chevrolet Van • 2015 GMC 2500 4x4 Pick-up • (1) 2015, (1) 2011 & (1) 2006 GMC 1500 4x4 Pick-ups

2010 GMC 3500 4x4 Pick-up • (2) 2012 Dodge 1 Ton Pick-ups • 2012 Dodge 3/4 Ton Pick-up

(2) 2014, (8) 2012 & (3) 2011 Dodge 3500 4x4 Pick-ups • (2) 2014, (1) 2013 & (1) 2012 Dodge 2500 4x4 Pick-ups

(3) 2012 Dodge 1500 4x4 Pick-ups • (1) 2016, (2) 2015, (2) 2014, (2) 2013 & (1) 2012 Toyota Tundra 4x4 Pick-ups







New as 2008



## (8) BELLY DUMPS

(5) 2008, 2006 & 2003 CTS Tandem-Axle • (3) 2006 Lufkin Tandem-Axle

## (60) TRAILERS

1995 Talbert 48' Drop Deck • 2013 Viking Lowboy • 2013 Globe Lowboy • Dragon Lowboy • Witzco Challenger Detachable • Texas Trailer 20' (4) Big Tex 20' • PJ 40' Tandem-Axle Gooseneck • Big Tex 18' • Big Tex 32' Gooseneck • CM Cargo • Bour Flatbed • East 45' Float Rockin C 20' Lowboy • C-5 Utility • Dorsey 53' Dry Van • Longhorn 16' Lowboy • (18) Assorted 16' - 20' Utility • (2) 36' Pipe • (6) 16' Trash (2) 18' Low Rail • (2) Water Wagons • (4) Sure-Pull & Jennings Gooseneck • (3) 40' Floats • Dragon 130 BBL Vacuum 2014 Big Tex 25' Gooseneck • 2012 PJ Flatbed • 2013 PJ Gooseneck • 2015 CM 20' Cargo • 2010 CTE Rhino • 2013 Big Tex 30' Gooseneck

proxibid BidSpotter.com INDUSTRIAL BID





**Have Assets for Sale?  
Need a Certified Appraisal?  
Looking for a Creative Solution?**

**We can assist with:**  
Auctions    Cash Purchases  
Financing    Liquidations

**Contact**  
Joel Bersh at 224-927-5302  
or joel@pplauction.com



## (9) GENERATORS

(2) Generac GP6500 • Generac CP5500 • (3) Generac 5500 • (2) Champion 5500 • Terex T35

## (5) AIR COMPRESSORS

(4) Atlas Copco 185 CFM Trailers • Sullivan Palatek 185 CFM Trailer

## (6) ATVs

2007 Kawasaki Mule 3010 • 2007 Kawasaki KAF400A • 2013 Polaris Ranger Crew • Polaris ATV 700 • Kawasaki ATV 610 • Polaris Razor 800

## MISCELLANEOUS EQUIPMENT

Pre-Heaters • DuraHeat Heaters • Beveling Transmissions • Beveling Bands • Ratchet Clamps • (40) Assorted 8" - 2" Dearman Beveling Machines  
Chart Recorders • Line Finders • (10) Spy Jeeps • Crystal Digital Dead Weights • Pneumatic Hand Tools • 4-Gas Monitors • Hand Tools  
Pneumatic Power Tools • Levels • Stihl Gas Powered Landscaping Equipment • Cub Cadet Rider Mowers • Air Compressors • Plate Compactors  
Conex 20' Shipping Container • Engine Driven Weeders • Generators • Augers • Scraper Blades • Pressure Washer • Armstrong 8' 2420 Disc  
(4) Clemco & All Source Sand Blasters • Engine Driven Trash Pumps • 3-Point Mower Decks • Mahindra 8' Disc • Power Post Drivers  
Light Towers • Sweepster Rotary Broom







105 Revere Drive, Suite C  
Northbrook, Illinois 60062

[www.pplauctions.com](http://www.pplauctions.com)

## OILFIELD SERVICE & CONSTRUCTION



# PUBLIC AUCTION



12627 E. Highway 21  
Midway, Texas 75852

**Theater Style Auction: Tues. April 16 10:00am CDT**

**INSPECTION: April 15 8:00 am - 4:00pm CDT & Morning of Sale**



INDUSTRIAL  
AUCTIONEERS  
ASSOCIATION



Machinery Dealers  
National Association

**ATTENTION: PLANT MANAGER  
OR MACHINERY BUYER**

## PUBLIC AUCTION MIDWAY OILFIELD CONSTRUCTORS

**Theater Style Auction: Tues. April 16 10am CDT**

**INSPECTION: Monday, April 15 8:00 am - 4:00pm CDT**

### Auction Terms & Conditions

**REGISTRATION & BIDDING:** Everything will be sold to the highest bidders for cash, in accordance with the auctioneer's normal "Terms of Sale", which are available at the site or by request at 224-927-5320. **A 15% Buyer's Premium will be added to the final bid price. All bids are in US dollars. An 18% Buyer's Premium will be added to online bids. Your bid is a contract:** Place a bid only if you're serious about buying the item. If you are the high bidder, you will enter into a legally binding contract with PPL Auction.

**PAYMENT:** All successful Bidders agree to make full payment to PPL Auction at the conclusion of the sale. Only Bank Wire Transfer, Bank Check or Cashier's Check payable to PPL Auction will be accepted. Firm and personal checks accepted only if accompanied by a letter from your bank guaranteeing your funds. If you are using a wire transfer your bank may wire the funds the day after the sale. All sales are subject to sales and/or local taxes unless a signed exemption form is presented at the time of the purchase. Payment will be made in US dollars only.

**VERIFY DESCRIPTIONS:** Note: Although all information has been obtained from sources deemed reliable, the auctioneer and seller make no warranty or guarantee, expressed or implied, as to the accuracy of the information contained in the auction brochure, lot catalog or sale web pages.

Buyer agrees to accept assets purchased per standard auction terms, "AS IS, WHERE IS, WITH ALL FAULTS" WITHOUT ANY REPRESENTATION OR WARRANTY BY PPL AUCTION OR ANY OTHER PERSON. THERE ARE NO EXPRESSED OR IMPLIED REPRESENTATIONS OR WARRANTIES WITH RESPECT TO THE ASSETS INCLUDING, WITHOUT LIMITATION, ANY REPRESENTATION OR WARRANTY REGARDING THE MERCHANTABILITY OR FITNESS FOR ANY PARTICULAR PURPOSE.

**REMOVAL & RIGGING:** Removal and Rigging is the responsibility of the buyer. Anyone, either a buyer or a rigger, who uses a powered vehicle to remove anything from the auction site, will be required to present a certificate of insurance. Removal may begin when the auction has completed and payment in full has been made.

**ISSUANCE OF TITLE:** Titles relative to titled assets purchased will be mailed to the purchaser's address on file after payment is received and cleared.

All invoices must be paid in full at end of auction. Any merchandise not paid for at this time will be considered abandoned and may be resold by auctioneer, any loss incurred in the resale to be borne by the original buyer.

### Place Bids Online at



ON-LINE BIDS SUBJECT TO 18% BUYER'S PREMIUM

Scan  
with  
your  
phone  
to link  
to our  
website



105 Revere Drive, Suite C  
Northbrook, Illinois 60062

Phone: 224.927.5320  
sales@pplauction.com

[www.pplauctions.com](http://www.pplauctions.com)



9786 Timber Circle, Suite A Spanish Fort, Alabama 36527  
504.579.4827 • info@m-epartners.com

[www.m-epartners.com](http://www.m-epartners.com)